

SLK1 Antibody

Catalog No: #21334



Package Size: #21334-1 50ul #21334-2 100ul #21334-4 25ul

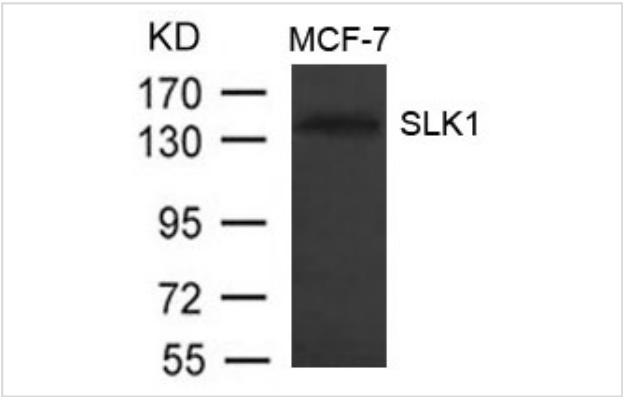
Overview

Product Name	SLK1 Antibody
Host Species	Rabbit
Clonality	Polyclonal
Applications	WB
Species Reactivity	Hu
Immunogen Type	Peptide-KLH
Target Name	SLK1
Alternative Names	STK2; STE20-like kinase; STE20-like serine/threonine-protein kinase; Serine/threonine-protein kinase 2;

Application Details

Predicted MW: 145kd
Western blotting: 1:500~1:1000

Images



Western blot analysis of extract from MCF-7 cells using SLK1 Antibody #21334

Descriptions

Immunogen	Peptide sequence around aa.1187~1191(K-T-L-E-E) derived from Human SLK1.
Specificity	The antibody detects endogenous level of total SLK1 protein.
Purification	Antibodies were produced by immunizing rabbits with synthetic peptide and KLH conjugates. Antibodies were purified by affinity-chromatography using epitope-specific peptide.
Formulation	Supplied at 1.0mg/mL in phosphate buffered saline (without Mg2+ and Ca2+), pH 7.4, 150mM NaCl, 0.02% sodium azide and 50% glycerol.
Storage	Store at -20°C for long term preservation (recommended). Store at 4°C for short term use.
Accession NO.	Swiss-Prot: Q9H2G2NCBI Protein: NP_055535.2

Related Information

Mediates apoptosis and actin stress fiber dissolution.

Note: This product is for in vitro research use only and is not intended for use in humans or animals.