

PRL-3 Antibody

Catalog No: #21333



Package Size: #21333-1 50ul #21333-2 100ul #21333-4 25ul

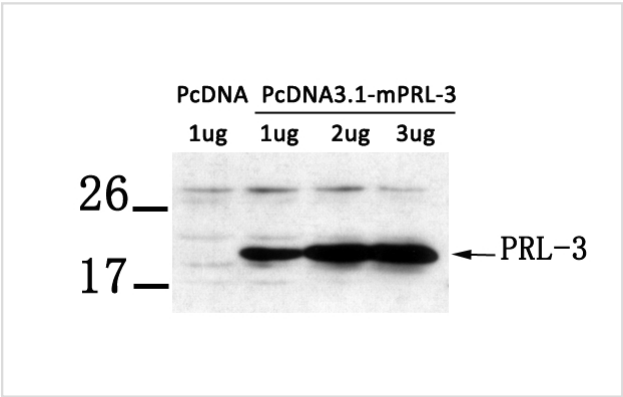
Overview

Product Name	PRL-3 Antibody
Host Species	Rabbit
Clonality	Polyclonal
Applications	WB
Species Reactivity	Hu Ms
Immunogen Type	Peptide-KLH
Target Name	PRL-3
Alternative Names	protein tyrosine phosphatase type IVA; PRL3; PRL-R; PTP4A3;

Application Details

Predicted MW: 22kd
Western blotting: 1:500~1:1000

Images



Western blot analysis of extract from LX-2 cells transfected with PRL-3 using PRL-3 antibody #21333.

Descriptions

Immunogen	Peptide sequence around aa. 161-166 (K-D-P-H-T) derived from Human PTP4A3.
Specificity	The antibody detects transfected PRL-3 protein.
Purification	Antibodies were produced by immunizing rabbits with synthetic peptide and KLH conjugates. Antibodies were purified by affinity-chromatography using epitope-specific peptide.
Formulation	Supplied at 1.0mg/mL in phosphate buffered saline (without Mg2+ and Ca2+), pH 7.4, 150mM NaCl, 0.02% sodium azide and 50% glycerol.
Storage	Store at -20°C for long term preservation (recommended). Store at 4°C for short term use.
Accession NO.	Swiss-Prot: O75365NCBI Protein: NP_116000

Related Information

Protein tyrosine phosphatase which stimulates progression from G1 into S phase during mitosis. Enhances cell proliferation, cell motility and invasive activity, and promotes cancer metastasis. May be involved in the progression of cardiac hypertrophy by inhibiting intracellular calcium mobilization in response to angiotensin II.

Matter W.F. et.al. Biochem. Biophys. Res. Commun. 283:1061-1068(2001)

Wang J.et.al. J. Biol. Chem. 277:46659-46668(2002)

Note: This product is for in vitro research use only and is not intended for use in humans or animals.