

TrkB(Ab-705) Antibody

Catalog No: #21328



Package Size: #21328-1 50ul #21328-2 100ul #21328-4 25ul

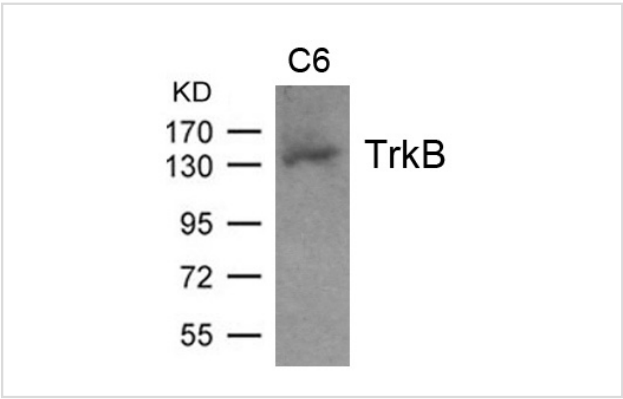
Overview

Product Name	TrkB(Ab-705) Antibody
Host Species	Rabbit
Clonality	Polyclonal
Applications	WB IF
Species Reactivity	Hu Ms Rt
Immunogen Type	Peptide-KLH
Target Name	TrkB
Alternative Names	TRKB; trk-B; GP145-TrkB

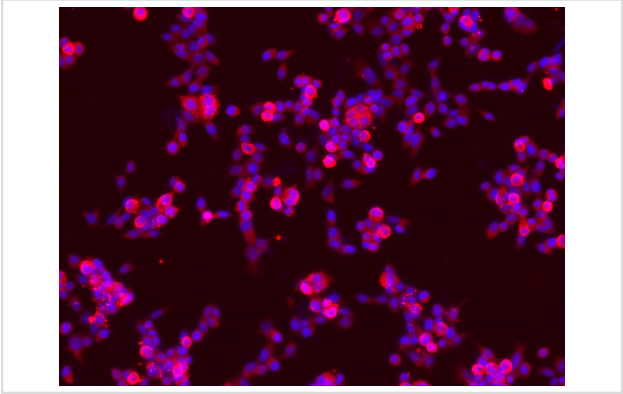
Application Details

Predicted MW: 145kd
Western blotting: 1:500~1:1000
Immunofluorescence: 1:100~1:200

Images



Western blot analysis of extract from C6 cell and using TrkB(Ab-705) Antibody #21328.



Immunofluorescence staining of methanol-fixed NCI-h446 cells showing cytoplasmic staining using TrkB (Ab-705) Antibody #21328.

Descriptions

Immunogen	Peptide sequence around aa.703~707 (T-D-Y -Y-R) derived from Human TrkB.
Specificity	The antibody detects endogenous levels of total TrkB protein.
Purification	Antibodies were produced by immunizing rabbits with synthetic peptide and KLH conjugates. Antibodies were purified by affinity-chromatography using epitope-specific peptide.
Formulation	Supplied at 1.0mg/mL in phosphate buffered saline (without Mg ²⁺ and Ca ²⁺), pH 7.4, 150mM NaCl, 0.02% sodium azide and 50% glycerol.
Storage	Store at -20°C for long term preservation (recommended). Store at 4°C for short term use.
Accession NO.	Swiss-Prot: Q16620NCBI Protein: NP_001007098.1

Related Information

Receptor for brain-derived neurotrophic factor (BDNF), neurotrophin-3 and neurotrophin-4/5 but not nerve growth factor (NGF). Involved in the development and/or maintenance of the nervous system. This is a tyrosine-protein kinase receptor. Known substrates for the TRK receptors are SHC1, PI-3 kinase, and PLC-gamma-1.

Woronowicz A, et al. Glycobiology. 2007 Jan;17(1):10-24. Mojsilovic-Petrovic J, et al. J Neurosci. 2006 Sep 6;26(36):9250-63. Lewis MA, et al. Mol Pharmacol. 2006 Apr;69(4):1396-404. Cai D, et al. Physiol Genomics. 2006 Feb 14;24(3):191-7.

Note: This product is for in vitro research use only and is not intended for use in humans or animals.