

# Smad1(Ab-465) Antibody

Catalog No: #21321



Package Size: #21321-1 50ul #21321-2 100ul #21321-4 25ul

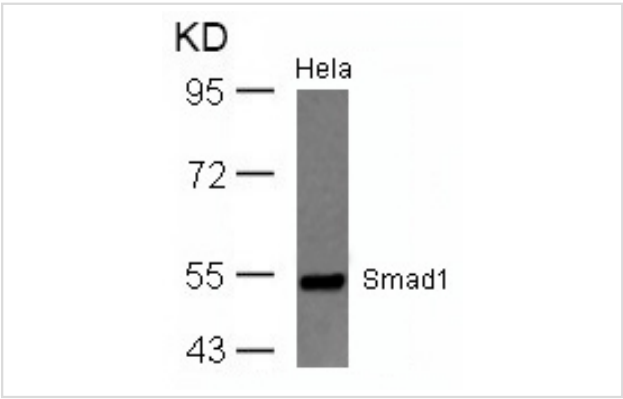
## Overview

Product Name	Smad1(Ab-465) Antibody
Host Species	Rabbit
Clonality	Polyclonal
Applications	WB IF
Species Reactivity	Hu Ms Rt
Immunogen Type	Peptide-KLH
Target Name	Smad1
Alternative Names	Mad-related protein 1; SMAD 1; hSMAD1; Transforming growth factor-beta-signaling protein 1;

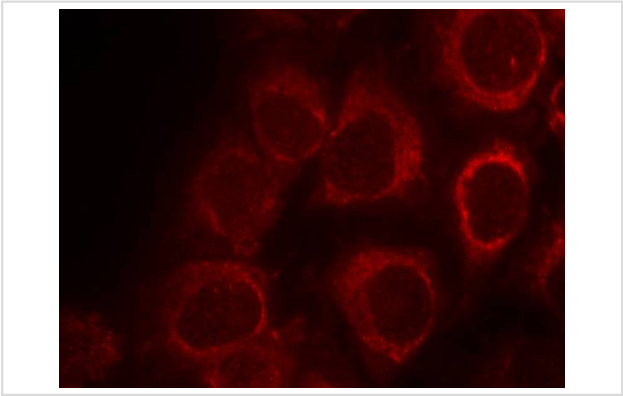
## Application Details

Predicted MW: 55kd
Western blotting: 1:500~1:1000
Immunofluorescence: 1:100~1:200

## Images



Western blot analysis of extracts from HeLa cells using Smad1(Ab-465) Antibody #21321.



Immunofluorescence staining of methanol-fixed HeLa cells using Smad1(Ab-465) Antibody #21321.

## Descriptions

Immunogen	Peptide sequence around aa. 461~465 (I-S-S-V-S) derived from Human Smad1.
Specificity	The antibody detects endogenous level of total Smad1 protein.
Purification	Antibodies were produced by immunizing rabbits with synthetic peptide and KLH conjugates. Antibodies were purified by affinity-chromatography using epitope-specific peptide.
Formulation	Supplied at 1.0mg/mL in phosphate buffered saline (without Mg <sup>2+</sup> and Ca <sup>2+</sup> ), pH 7.4, 150mM NaCl, 0.02% sodium azide and 50% glycerol.
Storage	Store at -20°C for long term preservation (recommended). Store at 4°C for short term use.
Accession NO.	Swiss-Prot: Q15797NCBI Protein: NP_001003688.1

## Related Information

Transcriptional modulator activated by BMP (bone morphogenetic proteins) type 1 receptor kinase. SMAD1 is a receptor-regulated SMAD (R-SMAD).

Hiroaki Seto, et al. (2004) J Clin Invest. March 1; 113(5): 718

Note: This product is for in vitro research use only and is not intended for use in humans or animals.