

Shc1(Ab-349) Antibody

Catalog No: #21316



Package Size: #21316-1 50ul #21316-2 100ul #21316-4 25ul

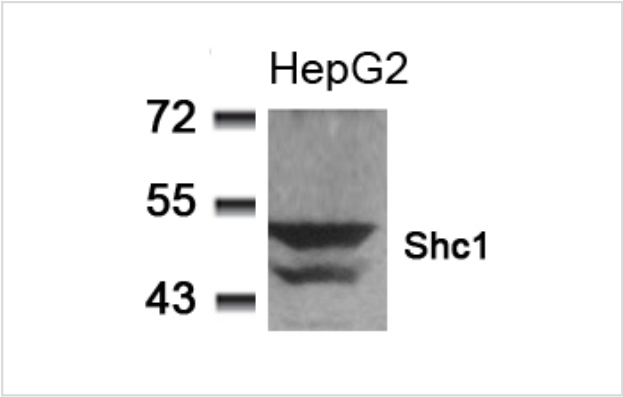
Overview

Product Name	Shc1(Ab-349) Antibody
Host Species	Rabbit
Clonality	Polyclonal
Applications	WB IF
Species Reactivity	Hu Ms
Immunogen Type	Peptide-KLH
Target Name	Shc1
Alternative Names	SH2 domain protein C1; SHC; SHC-transforming protein 1; SHCA; Src homology 2 domain-containing-transforming protein C1

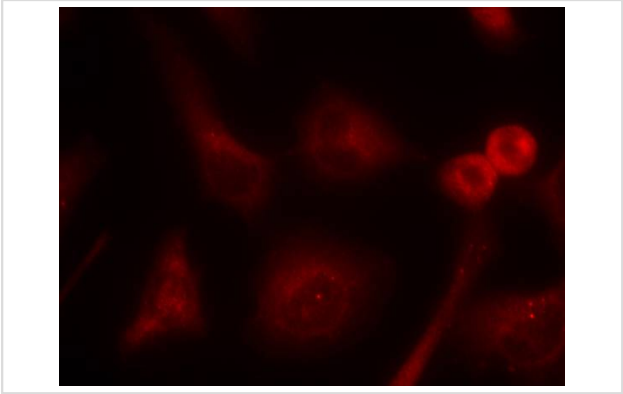
Application Details

Predicted MW: 46 52 66kd
Western blotting: 1:500~1:1000
Immunofluorescence: 1:100~1:200

Images



Western blot analysis of extracts from HepG2 cells using Shc1(Ab-349) Antibody #21316.



Immunofluorescence staining of methanol-fixed HeLa cells using Shc1(Ab-349) Antibody #21316.

Descriptions

Immunogen	Peptide sequence around aa.347~351 (H-Q-Y-Y-N) derived from Human Shc1.
Specificity	The antibody detects endogenous level of total Shc1 protein.
Purification	Antibodies were produced by immunizing rabbits with synthetic peptide and KLH conjugates. Antibodies were purified by affinity-chromatography using epitope-specific peptide.
Formulation	Supplied at 1.0mg/mL in phosphate buffered saline (without Mg ²⁺ and Ca ²⁺), pH 7.4, 150mM NaCl, 0.02% sodium azide and 50% glycerol.
Storage	Store at -20°C for long term preservation (recommended). Store at 4°C for short term use.
Accession NO.	Swiss-Prot: P29353NCBI Protein: NP_001123512.1

Related Information

Signaling adapter that couples activated growth factor receptors to signaling pathway. Isoform p46Shc and isoform p52Shc, once phosphorylated, couple activated receptor tyrosine kinases to Ras via the recruitment of the GRB2/SOS complex and are implicated in the cytoplasmic propagation of mitogenic signals. Isoform p46Shc and isoform p52Shc may thus function as initiators of the Ras signaling cascade in various non-neuronal systems. Isoform p66Shc does not mediate Ras activation, but is involved in signal transduction pathways that regulate the cellular response to oxidative stress and life span. Isoform p66Shc acts as a downstream target of the tumor suppressor p53 and is indispensable for the ability of stress-activated p53 to induce elevation of intracellular oxidants, cytochrome c release and apoptosis. The expression of isoform p66Shc has been correlated with life span

Tramont P, et al. (2006) Mol Cell Biol; 26(23): 9035-9044.

Patrussi L, et al. (2005) Oncogene; 24(13): 2218-2228

van der Geer P, et al. (1996) Curr Biol ; 6(11): 1435-1444

Note: This product is for in vitro research use only and is not intended for use in humans or animals.