

# synapsin(Ab-9) Antibody

Catalog No: #21259



Package Size: #21259-1 50ul #21259-2 100ul #21259-4 25ul

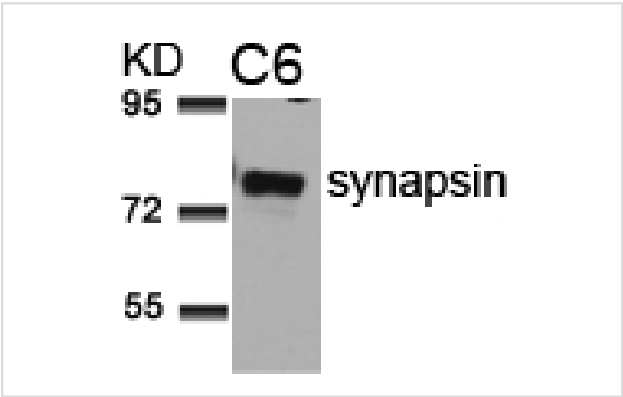
## Overview

Product Name	synapsin(Ab-9) Antibody
Host Species	Rabbit
Clonality	Polyclonal
Applications	WB
Species Reactivity	Human Mouse Rat
Immunogen Type	Peptide-KLH
Target Name	synapsin
Alternative Names	Syn-1, synapsin I

## Application Details

Predicted MW: 77kd
Western blotting: 1:500~1:1000

## Images



Western blot analysis of extracts from C6 cells using synapsin(Ab-9) Antibody #21259.

## Descriptions

Immunogen	Peptide sequence around aa.7~11 (R-L-S-D-S) derived from Human SYN1/synapsin.
Specificity	The antibody detects endogenous level of total synapsin protein.
Purification	Antibodies were produced by immunizing rabbits with synthetic peptide and KLH conjugates. Antibodies were purified by affinity-chromatography using epitope-specific peptide.
Formulation	Supplied at 1.0mg/mL in phosphate buffered saline (without Mg2+ and Ca2+), pH 7.4, 150mM NaCl, 0.02% sodium azide and 50% glycerol.
Storage	Store at -20°C for long term preservation (recommended). Store at 4°C for short term use.
Accession NO.	Swiss-Prot: P17600NCBI Protein: NP_008881.2

## Related Information

Neuronal phosphoprotein that coats synaptic vesicles, binds to the cytoskeleton, and is believed to function in the regulation of neurotransmitter release. The complex formed with NOS1 and CAPON proteins is necessary for specific nitric-oxid functions at a presynaptic level

Diviya Sinha, et.al. (2005) Am J Physiol Renal Physiol ; 288: F703 - F713.

Franco Onofri, et.al. (2000) J. Biol. Chem ; 275: 29857.

Dario Bonanomi, et.al. (2005) J. Neurosci; 25: 7299 - 7308.

Hiroshi Tokumitsu, et.al. (2005) J. Biol. Chem ; 280: 35108 - 35118.

**Note:** This product is for in vitro research use only and is not intended for use in humans or animals.