

# MARCKS(Ab-162) Antibody

Catalog No: #21257



Package Size: #21257-1 50ul #21257-2 100ul #21257-4 25ul

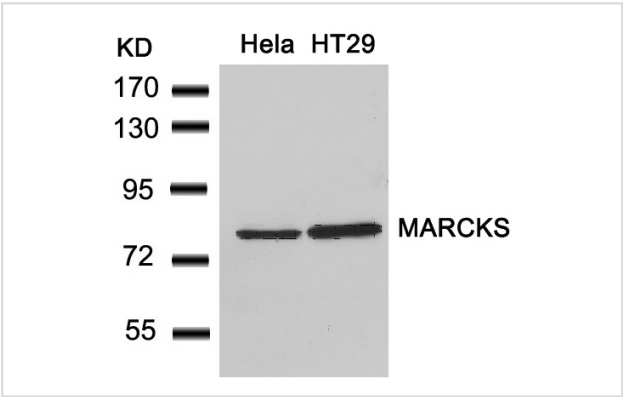
## Overview

Product Name	MARCKS(Ab-162) Antibody
Host Species	Rabbit
Clonality	Polyclonal
Applications	WB
Species Reactivity	Hu Ms Rt
Immunogen Type	Peptide-KLH
Target Name	MARCKS
Alternative Names	MACS; MARCS; PKCSL; PRKCSL; Protein kinase C substrate

## Application Details

Predicted MW: 80kd
Western blotting: 1:500~1:1000

## Images



Western blot analysis of extracts from HeLa and HT29 cells using MARCKS(Ab-162) Antibody #21257.

## Descriptions

Immunogen	Peptide sequence around aa. 160~164 (K-K-S-F-K) derived from Human MARCKS.
Specificity	The antibody detects endogenous level of total MARCKS protein.
Purification	Antibodies were produced by immunizing rabbits with synthetic peptide and KLH conjugates. Antibodies were purified by affinity-chromatography using epitope-specific peptide.
Formulation	Supplied at 1.0mg/mL in phosphate buffered saline (without Mg <sup>2+</sup> and Ca <sup>2+</sup> ), pH 7.4, 150mM NaCl, 0.02% sodium azide and 50% glycerol.
Storage	Store at -20°C for long term preservation (recommended). Store at 4°C for short term use.
Accession NO.	Swiss-Prot: P29966NCBI Protein: NP_002347.5

## Related Information

---

MARCKS is the most prominent cellular substrate for protein kinase C. This protein binds calmodulin, actin, and synapsin. MARCKS is a filamentous (F) actin cross-linking protein.

Pariser H, et al. Proc Natl Acad Sci U S A 2005 Aug 30; 102(35): 12407-12412

Nagumo H, et al. Biochem Biophys Res Commun 2001 Jan 26; 280(3): 605-609

Yamamoto H, et al. Arch Biochem Biophys 1998 Nov 15; 359(2): 151-159

---

Note: This product is for in vitro research use only and is not intended for use in humans or animals.