

HSF1(Ab-303) Antibody

Catalog No: #21255



Package Size: #21255-1 50ul #21255-2 100ul #21255-4 25ul

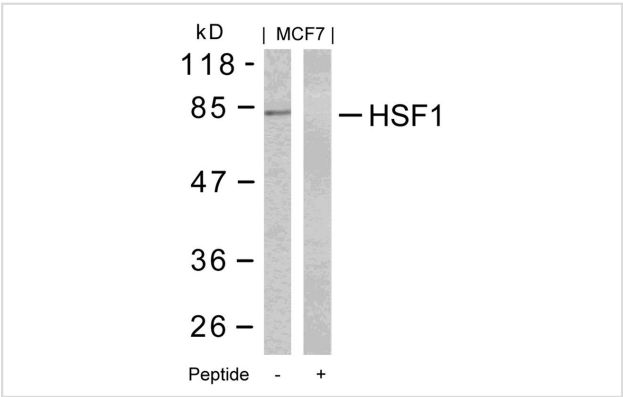
Overview

Product Name	HSF1(Ab-303) Antibody
Host Species	Rabbit
Clonality	Polyclonal
Applications	WB IHC
Species Reactivity	Hu
Immunogen Type	Peptide-KLH
Target Name	HSF1
Alternative Names	HSTF 1

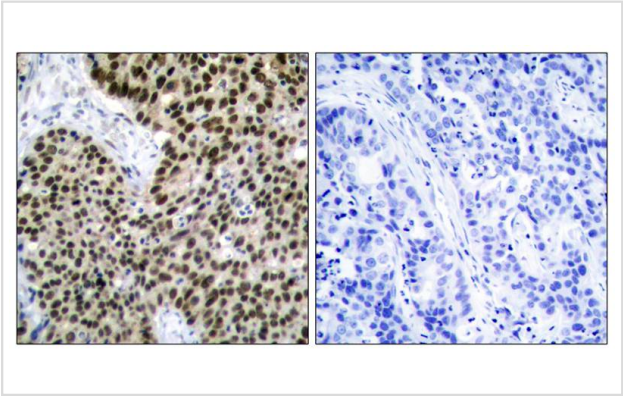
Application Details

Predicted MW: 82kd
Western blotting: 1:500~1:1000
Immunohistochemistry: 1:50~1:100

Images



Western blot analysis of extracts from MCF7 cells using HSF1(Ab-303) Antibody #21255 and the same antibody preincubated with blocking peptide.



Immunohistochemical analysis of paraffin-embedded human breast carcinoma tissue using HSF1(Ab-303) Antibody #21255(left) or the same antibody preincubated with blocking peptide(right).

Descriptions

Immunogen	Peptide sequence around aa.301~305 (P-P-S-P-P) derived from Human HSF1.
Specificity	The antibody detects endogenous level of total HSF1 H3.1 protein.
Purification	Antibodies were produced by immunizing rabbits with synthetic peptide and KLH conjugates. Antibodies were purified by affinity-chromatography using epitope-specific peptide.
Formulation	Supplied at 1.0mg/mL in phosphate buffered saline (without Mg ²⁺ and Ca ²⁺), pH 7.4, 150mM NaCl, 0.02% sodium azide and 50% glycerol.
Storage	Store at -20°C for long term preservation (recommended). Store at 4°C for short term use.
Accession NO.	Swiss-Prot: Q00613NCBI Protein: NP_005517.1

Related Information

DNA-binding protein that specifically binds heat shock promoter elements (HSE) and activates transcription. In higher eukaryotes, HSF is unable to bind to the HSE unless the cells are heat shocked.

Parvaneh Rafiee, et.al. (2006) Am J Physiol Cell Physiol ; 291: C931 - C945

Fumika Shinozaki, et.al. (2006) J. Biol. Chem ; 281: 16361 - 16369.

Eiichi Takaki, et.al. (2006) J. Biol. Chem ; 281: 4931 - 4937.

Jan-Jong Hung, et.al. (1998) J. Biol. Chem ; 273: 31924.

Note: This product is for in vitro research use only and is not intended for use in humans or animals.