

# Connexin 43(Ab-367) Antibody

Catalog No: #21250



Package Size: #21250-1 50ul #21250-2 100ul #21250-4 25ul

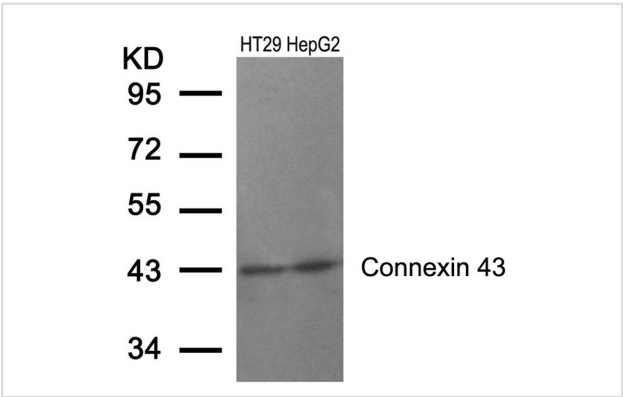
## Overview

Product Name	Connexin 43(Ab-367) Antibody
Host Species	Rabbit
Clonality	Polyclonal
Applications	WB IHC
Species Reactivity	Hu Ms Rt
Immunogen Type	Peptide-KLH
Target Name	Connexin 43
Alternative Names	CX43; CXA1; CXN-43; Connexin 43; GJA1

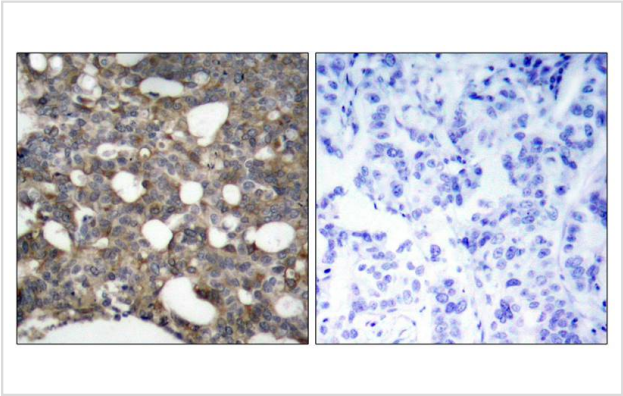
## Application Details

Predicted MW: 43kd
Western blotting: 1:500~1:1000
Immunohistochemistry: 1:50~1:100

## Images



Western blot analysis of extracts from HT29 and HepG2 cells using Connexin 43(Ab-367) Antibody #21250.



Immunohistochemical analysis of paraffin-embedded human breast carcinoma tissue using Connexin 43(Ab-367) Antibody #21250(left) or the same antibody preincubated with blocking peptide(right).

## Descriptions

Immunogen	Peptide sequence around aa. 365~369 (R-A-S-S-R) derived from Human Connexin 43.
Specificity	The antibody detects endogenous level of total Connexin43 protein.
Purification	Antibodies were produced by immunizing rabbits with synthetic peptide and KLH conjugates. Antibodies were purified by affinity-chromatography using epitope-specific peptide.
Formulation	Supplied at 1.0mg/mL in phosphate buffered saline (without Mg <sup>2+</sup> and Ca <sup>2+</sup> ), pH 7.4, 150mM NaCl, 0.02% sodium azide and 50% glycerol.
Storage	Store at -20°C for long term preservation (recommended). Store at 4°C for short term use.
Accession NO.	Swiss-Prot: P17302NCBI Protein: NP_000156.1

## Related Information

One gap junction consists of a cluster of closely packed pairs of transmembrane channels, the connexons, through which materials of low MW diffuse from one cell to a neighboring cell. May play a critical role in the physiology of hearing by participating in the recycling of potassium to the cochlear endolymph.

Joell L. Solan<sup>1</sup>, et al. (2003) Cell Science 116: 2203-2211

Satoshi Matsushita, et al. (2006) Histochemistry and Cytochemistry 54 (3): 343-353,

Xiaoyong Bao, et al. (2004) Cell Physiol 286: C647-C654

W. E. I. Li, et al.(1998) European Journal of Neuroscience 10: 2444

**Note:** This product is for in vitro research use only and is not intended for use in humans or animals.