

p70 S6 Kinase(Ab-421) Antibody

Catalog No: #21246



Package Size: #21246-1 50ul #21246-2 100ul #21246-4 25ul

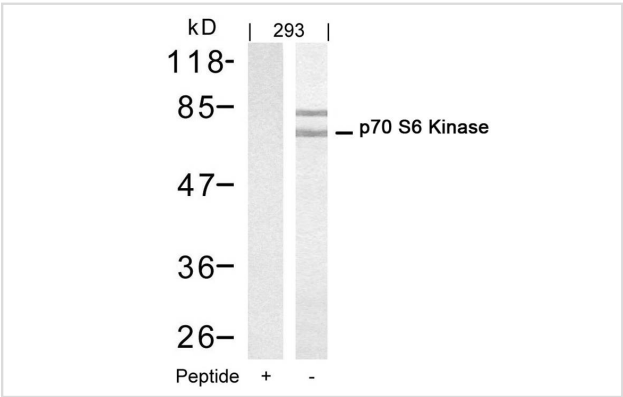
Overview

Product Name	p70 S6 Kinase(Ab-421) Antibody
Host Species	Rabbit
Clonality	Polyclonal
Applications	WB IHC
Species Reactivity	Hu Ms Rt
Immunogen Type	Peptide-KLH
Target Name	p70 S6 Kinase
Alternative Names	KS6B1; P70-S6K; RPS6KB1; S6K;

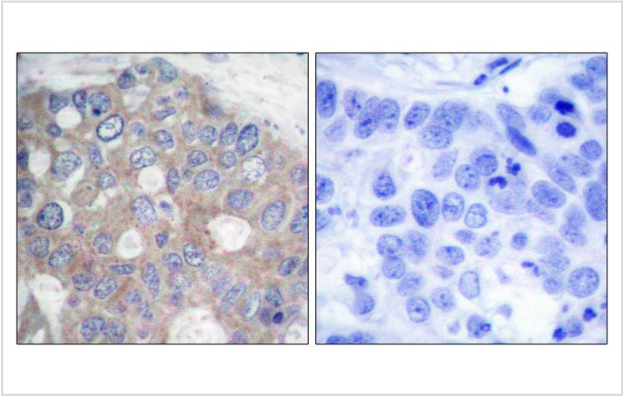
Application Details

Predicted MW: 70 85 kd
Western blotting: 1:500~1:1000
Immunohistochemistry: 1:50~1:100

Images



Western blot analysis of extracts from 293 cells using p70 S6 Kinase(Ab-421) Antibody #21246(Lane 2) and the same antibody preincubated with blocking peptide(Lane1).



Immunohistochemical analysis of paraffin-embedded human breast carcinoma tissue using p70 S6 Kinase(Ab-421) Antibody #21246(left) or the same antibody preincubated with blocking peptide(right).

Descriptions

Immunogen	Peptide sequence around aa.419~423 (P-R-T-P-V) derived from Human p70 S6 Kinase.
Specificity	The antibody detects endogenous level of total p70 S6 Kinase protein.
Purification	Antibodies were produced by immunizing rabbits with synthetic peptide and KLH conjugates. Antibodies were purified by affinity-chromatography using epitope-specific peptide.
Formulation	Supplied at 1.0mg/mL in phosphate buffered saline (without Mg ²⁺ and Ca ²⁺), pH 7.4, 150mM NaCl, 0.02% sodium azide and 50% glycerol.
Storage	Store at -20°C for long term preservation (recommended). Store at 4°C for short term use.
Accession NO.	Swiss-Prot: P23443NCBI Protein: NP_003152.1

Related Information

Phosphorylates specifically ribosomal protein S6 in response to insulin or several classes of mitogens. Promotes protein synthesis by phosphorylating PDCD4 at 'Ser-67' and targeting it for degradation.

Xiao-Feng, et al. (2003) Le1 30 Volume 22: 484-497

An WL, et al. (2003) Am J Pathol. 163(2): 591-607.

Le XF, et al. (2003) Oncogene.22(4): 484-97

Note: This product is for in vitro research use only and is not intended for use in humans or animals.