

# eNOS(Ab-495) Antibody

Catalog No: #21235



Package Size: #21235-1 50ul #21235-2 100ul #21235-4 25ul

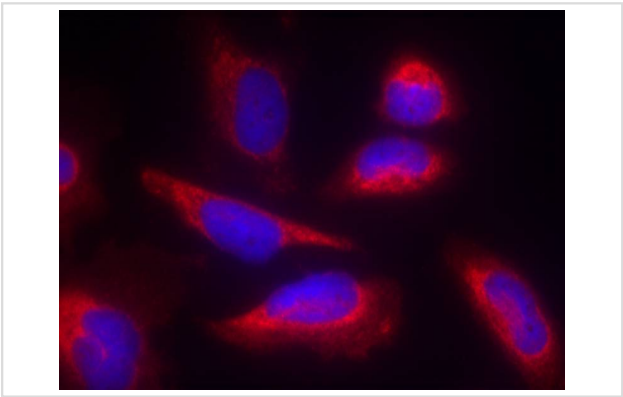
## Overview

Product Name	eNOS(Ab-495) Antibody
Host Species	Rabbit
Clonality	Polyclonal
Applications	IF
Species Reactivity	Hu Ms Rt
Immunogen Type	Peptide-KLH
Target Name	eNOS
Alternative Names	Constitutive NOS; EC-NOS; ECNOS; NOS3; NOSIII

## Application Details

Predicted MW: 140kd
Immunofluorescence: 1:100~1:200

## Images



Immunofluorescence staining of methanol-fixed HeLa cells using eNOS(Ab-495) Antibody #21235.

## Descriptions

Immunogen	Peptide sequence around aa.493~497 (K-K-T-F-K) derived from Human eNOS.
Specificity	The antibody detects endogenous level of total eNOS protein.
Purification	Antibodies were produced by immunizing rabbits with synthetic peptide and KLH conjugates. Antibodies were purified by affinity-chromatography using epitope-specific peptide.
Formulation	Supplied at 1.0mg/mL in phosphate buffered saline (without Mg2+ and Ca2+), pH 7.4, 150mM NaCl, 0.02% sodium azide and 50% glycerol.
Storage	Store at -20°C for long term preservation (recommended). Store at 4°C for short term use.
Accession NO.	Swiss-Prot: P29474NCBI Protein: NP_000594.2

## Related Information

Produces nitric oxide (NO) which is implicated in vascular smooth muscle relaxation through a cGMP-mediated signal transduction pathway. NO mediates vascular endothelial growth factor (VEGF)-induced angiogenesis in coronary vessels and promotes blood clotting through the activation of platelets.

Moreno H Jr.(2008)Breast Cancer Res Treat. 109(1):181-2.

Lorenz M,et al.(2007)FASEB J. May;21(7):1556-64.

Lin Hl,et al.(2006)Transplant Proc. Sep;38(7):2203-6.

---

**Note:** This product is for in vitro research use only and is not intended for use in humans or animals.