

c-Kit(Ab-721) Antibody

Catalog No: #21232



Package Size: #21232-1 50ul #21232-2 100ul #21232-4 25ul

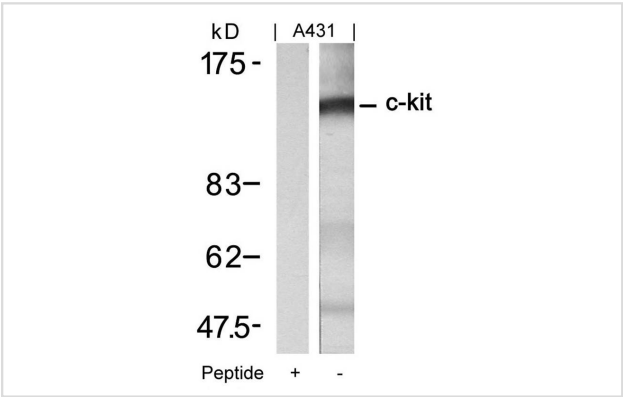
Overview

Product Name	c-Kit(Ab-721) Antibody
Host Species	Rabbit
Clonality	Polyclonal
Applications	WB
Species Reactivity	Hu Ms Rt
Immunogen Type	Peptide-KLH
Target Name	c-Kit
Alternative Names	KIT; CD117; SCFR; PBT;

Application Details

Predicted MW: 145kd
Western blotting: 1:500~1:1000

Images



Western blot analysis of extracts from A431 cells using c-Kit(Ab-721) Antibody #21232 and the same antibody preincubated with blocking peptide.

Descriptions

Immunogen	Peptide sequence around aa.719~723 (N-E-Y-M-D) derived from Human c-Kit.
Specificity	The antibody detects endogenous level of total c-Kit protein.
Purification	Antibodies were produced by immunizing rabbits with synthetic peptide and KLH conjugates. Antibodies were purified by affinity-chromatography using epitope-specific peptide.
Formulation	Supplied at 1.0mg/mL in phosphate buffered saline (without Mg2+ and Ca2+), pH 7.4, 150mM NaCl, 0.02% sodium azide and 50% glycerol.
Storage	Store at -20°C for long term preservation (recommended). Store at 4°C for short term use.
Accession NO.	Swiss-Prot: P11362NCBI Protein: NP_000213.1

## Related Information

This is the receptor for stem cell factor (mast cell growth factor). It has a tyrosine-protein kinase activity. Binding of the ligands leads to the autophosphorylation of KIT and its association with substrates such as phosphatidylinositol 3-kinase (PI3K)

Kimura W, et al. (2007) *Hepatology* 54(80):2203-8.

Naeem M, et al. (2002) *Hum Pathol*. 33(12):1182-7.

Jankulovski N, et al. (2006) *Prilozi*. 27(2):59-70.

## Published Papers

Shinka Miyamoto, Nanako Kawaguchi, Georgina M. Ellison et al., Characterization of Long-Term Cultured c-kit<sup>+</sup> Cardiac Stem Cells Derived From Adult Rat Hearts., *STEM CELLS AND DEVELOPMENT*, 19(1):105-116(2010)

[PMID:19580375](#)

**Note:** This product is for in vitro research use only and is not intended for use in humans or animals.