

# Stathmin1(Ab-16) Antibody

Catalog No: #21227



Package Size: #21227-1 50ul #21227-2 100ul #21227-4 25ul

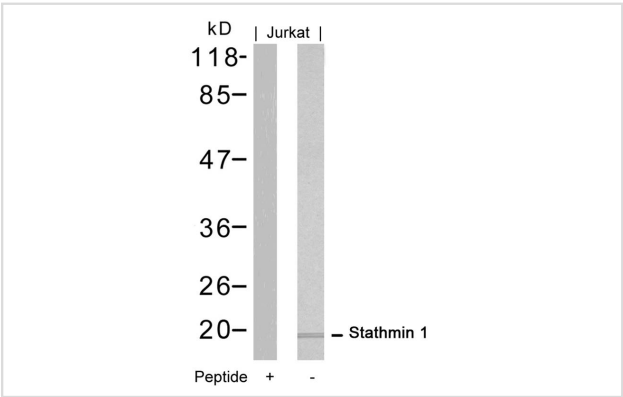
## Overview

Product Name	Stathmin1(Ab-16) Antibody
Host Species	Rabbit
Clonality	Polyclonal
Applications	WB IHC
Species Reactivity	Hu Ms Rt
Immunogen Type	Peptide-KLH
Target Name	Stathmin1
Alternative Names	STMN1; STN1; stathmin

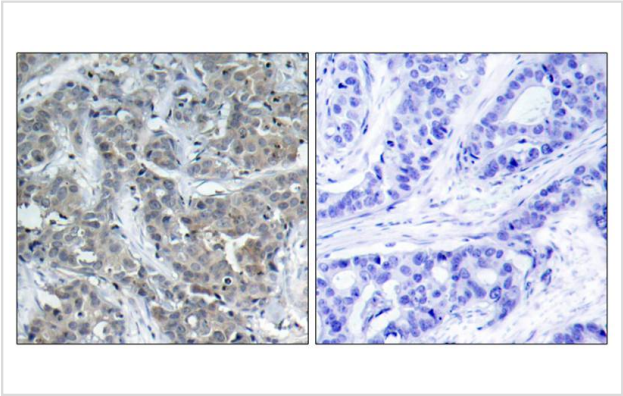
## Application Details

Predicted MW: 19kd
Western blotting: 1:500~1:1000
Immunohistochemistry: 1:50~1:100

## Images



Western blot analysis of extracts from Jurkat cells using Stathmin 1(Ab-16) Antibody #21227 and the same antibody preincubated with blocking peptide.



Immunohistochemical analysis of paraffin-embedded human breast carcinoma tissue using Stathmin 1(Ab-16) Antibody #21227(left) or the same antibody preincubated with blocking peptide(right).

## Descriptions

Immunogen	Peptide sequence around aa.14~18 (R-A-S-G-Q) derived from Human Stathmin 1.
Specificity	The antibody detects endogenous level of total Stathmin 1 protein.
Purification	Antibodies were produced by immunizing rabbits with synthetic peptide and KLH conjugates. Antibodies were purified by affinity-chromatography using epitope-specific peptide.
Formulation	Supplied at 1.0mg/mL in phosphate buffered saline (without Mg <sup>2+</sup> and Ca <sup>2+</sup> ), pH 7.4, 150mM NaCl, 0.02% sodium azide and 50% glycerol.
Storage	Store at -20°C for long term preservation (recommended). Store at 4°C for short term use.
Accession NO.	Swiss-Prot: P16949NCBI Protein: NP_001138926.1

## Related Information

Involved in the regulation of the microtubule (MT) filament system by destabilizing microtubules. Prevents assembly and promotes disassembly of microtubules. Phosphorylation at Ser-16 may be required for axon formation during neurogenesis. Involved in the control of the learned and innate fear

Larsson N, et al. (1999) Mol Cell Biol; 19(3): 2242-2250

K

**Note:** This product is for in vitro research use only and is not intended for use in humans or animals.