

S6 Ribosomal Protein(Ab-235) Antibody

Catalog No: #21225



Package Size: #21225-1 50ul #21225-2 100ul #21225-4 25ul

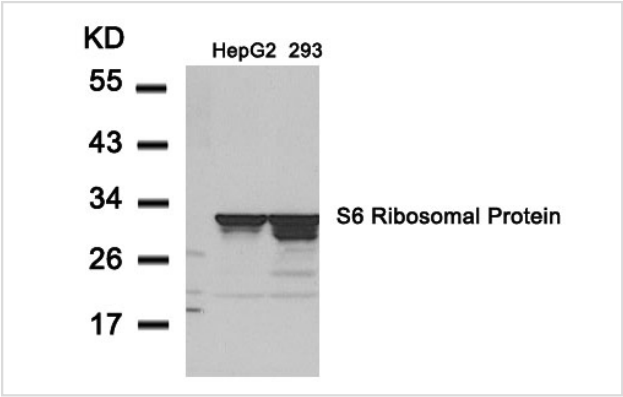
Overview

Product Name	S6 Ribosomal Protein(Ab-235) Antibody
Host Species	Rabbit
Clonality	Polyclonal
Applications	WB IHC IF
Species Reactivity	Hu Ms Rt
Immunogen Type	Peptide-KLH
Target Name	S6 Ribosomal Protein
Alternative Names	NP33; RPS6; RS6

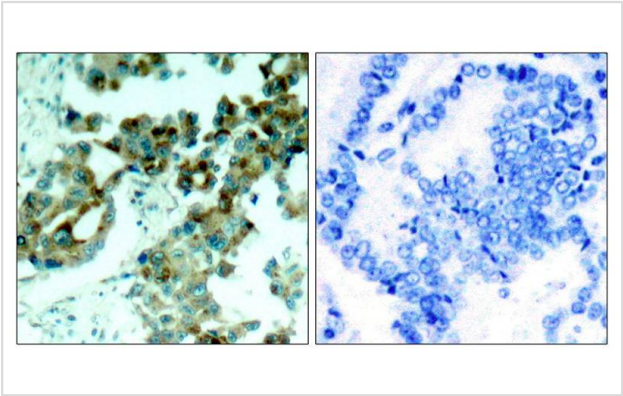
Application Details

Predicted MW: 32kd
Western blotting: 1:500~1:1000
Immunohistochemistry: 1:50~1:100
Immunofluorescence: 1:100~1:200

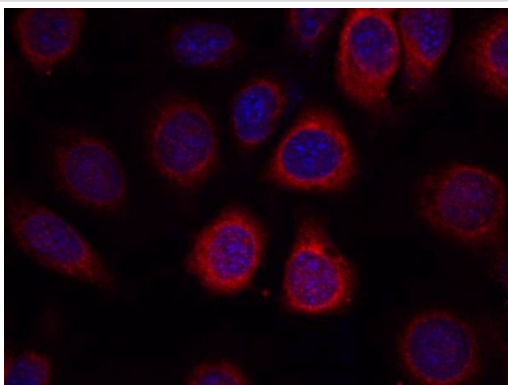
Images



Western blot analysis of extracts from HepG2 and 293 cells using S6 Ribosomal Protein(Ab-235) Antibody #21225.



Immunohistochemical analysis of paraffin- embedded human lung carcinoma tissue using S6 Ribosomal Protein(Ab-235) Antibody #21225(left) or the same antibody preincubated with blocking peptide(right).



Immunofluorescence staining of methanol-fixed MCF7 cells using S6 Ribosomal Protein(Ab-235) Antibody #21225.

Descriptions

Immunogen	Peptide sequence around aa. 233~237 (R-L-S-S-L) derived from Human S6 Ribosomal Protein.
Specificity	The antibody detects endogenous level of total S6 Ribosomal protein.
Purification	Antibodies were produced by immunizing rabbits with synthetic peptide and KLH conjugates. Antibodies were purified by affinity-chromatography using epitope-specific peptide.
Formulation	Supplied at 1.0mg/mL in phosphate buffered saline (without Mg ²⁺ and Ca ²⁺), pH 7.4, 150mM NaCl, 0.02% sodium azide and 50% glycerol.
Storage	Store at -20°C for long term preservation (recommended). Store at 4°C for short term use.
Accession NO.	Swiss-Prot: P62753NCBI Protein: NP_001001.2

Related Information

May play an important role in controlling cell growth and proliferation through the selective translation of particular classes of mRNA.

McBride K, et al. (1998) Mol Cell Biol 18(9): 5073-5081.

Williams AJ, et al. (2003) Plant Physiol 132(4): 2086-2097.

Wilson MA, et al. (1997) Biochem J 325(Pt 1): 217-222.

Arnesen T, et al. (2005) Biochem J 386(Pt 3): 433-443.

Note: This product is for in vitro research use only and is not intended for use in humans or animals.