

GABRB1(Ab-434) Antibody

Catalog No: #21205



Package Size: #21205-1 50ul #21205-2 100ul #21205-4 25ul

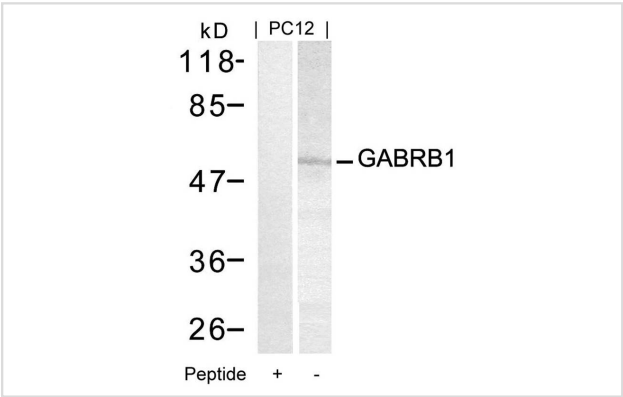
Overview

Product Name	GABRB1(Ab-434) Antibody
Host Species	Rabbit
Clonality	Polyclonal
Applications	WB
Species Reactivity	Hu Ms Rt
Immunogen Type	Peptide-KLH
Target Name	GABRB1
Alternative Names	GABA(A) receptor; GABA(A)R beta-1; GBRB1; GABA-RB;

Application Details

Predicted MW: 54kd
Western blotting: 1:500~1:1000

Images



Western blot analysis of extracts from PC12 cells using GABRB1(Ab-434) Antibody #21205 and the same antibody preincubated with blocking peptide.

Descriptions

Immunogen	Peptide sequence around aa.432~436 (R-A-S-Q-L) derived from Human GABRB1.
Specificity	The antibody detects endogenous level of total GABRB1 protein.
Purification	Antibodies were produced by immunizing rabbits with synthetic peptide and KLH conjugates. Antibodies were purified by affinity-chromatography using epitope-specific peptide.
Formulation	Supplied at 1.0mg/mL in phosphate buffered saline (without Mg2+ and Ca2+), pH 7.4, 150mM NaCl, 0.02% sodium azide and 50% glycerol.
Storage	Store at -20°C for long term preservation (recommended). Store at 4°C for short term use.
Accession NO.	Swiss-Prot: P18505NCBI Protein: NP_000803.2

Related Information

The gamma-aminobutyric acid (GABA) A receptor is a multisubunit chloride channel that mediates the fastest inhibitory synaptic transmission in the central nervous system. This gene encodes GABA A receptor, beta 1 subunit. It is mapped to chromosome 4p12 in a cluster comprised of genes encoding a 4, a 2 and gamma 1 subunits of the GABA A receptor. Alteration of this gene is implicated in the pathogenetics of schizophrenia.

Collins AL, et al. (2006) *Neurogenetics* ;7(3):167-174.

Ma DQ, et al. (2005) *Am J Hum Genet* ;77(3):377-388.

Edenberg HJ, et al. (2004) *Am J Hum Genet* ;74(4):705-714.

Note: This product is for in vitro research use only and is not intended for use in humans or animals.