

Bcr(Ab-177) Antibody

Catalog No: #21197



Package Size: #21197-1 50ul #21197-2 100ul #21197-4 25ul

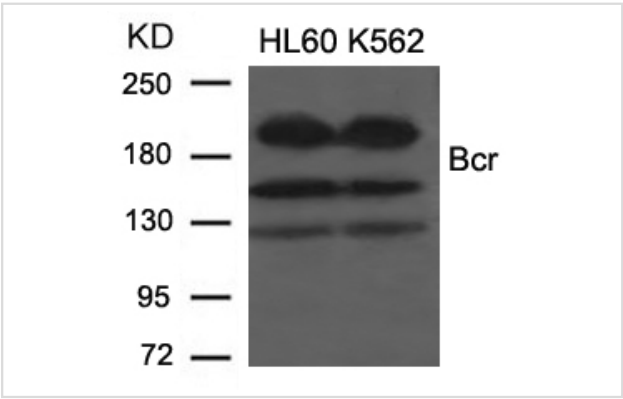
Overview

Product Name	Bcr(Ab-177) Antibody
Host Species	Rabbit
Clonality	Polyclonal
Applications	WB IF
Species Reactivity	Hu Ms
Immunogen Type	Peptide-KLH
Target Name	Bcr
Alternative Names	Renal carcinoma antigen NY-REN-26

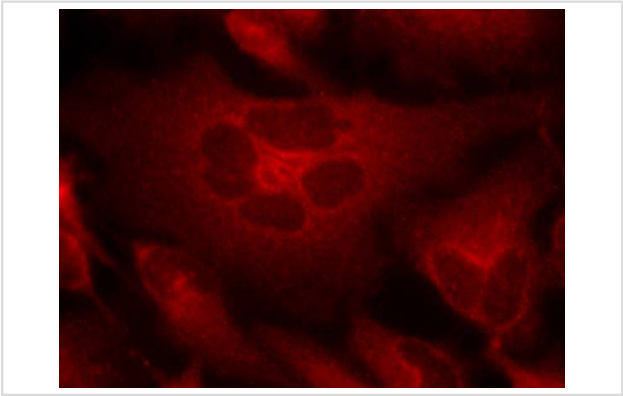
Application Details

Predicted MW: 130 160 210kd
Western blotting: 1:500~1:1000
Immunofluorescence: 1:100~1:200

Images



Western blot analysis of extracts from HL60 and K562 cells using Bcr(Ab-177) Antibody #21197.



Immunofluorescence staining of methanol-fixed Hela cells using Bcr(Ab-177) Antibody #21197.

Descriptions

Immunogen	Peptide sequence around aa. 175~179 (P-F-Y-V-N) derived from Human Bcr.
Specificity	The antibody detects endogenous level of total Bcr protein.
Purification	Antibodies were produced by immunizing rabbits with synthetic peptide and KLH conjugates. Antibodies were purified by affinity-chromatography using epitope-specific peptide.
Formulation	Supplied at 1.0mg/mL in phosphate buffered saline (without Mg ²⁺ and Ca ²⁺), pH 7.4, 150mM NaCl, 0.02% sodium azide and 50% glycerol.
Storage	Store at -20°C for long term preservation (recommended). Store at 4°C for short term use.
Accession NO.	Swiss-Prot: P11274NCBI Protein: NP_004318.3

Related Information

GTPase-activating protein for RAC1 and CDC42. Promotes the exchange of RAC or CDC42-bound GDP by GTP, thereby activating them. Displays serine/threonine kinase activity.

Sattler M, et al. Mol Cell Biol. 1999 Nov; 19(11): 7473-7480.

Li S et al. EMBO J. 2001 Dec 3; 20(23): 6793-6804.

Million RP, et.al. Mol Cell Biol. 2004 Jun; 24(11): 4685-4695.

Malcolm A. Meyn, et al. . Biol. Chem., Oct 2006; 281: 30907

Note: This product is for in vitro research use only and is not intended for use in humans or animals.