

MEK1(Ab-221) Antibody

Catalog No: #21175



Package Size: #21175-1 50ul #21175-2 100ul #21175-4 25ul

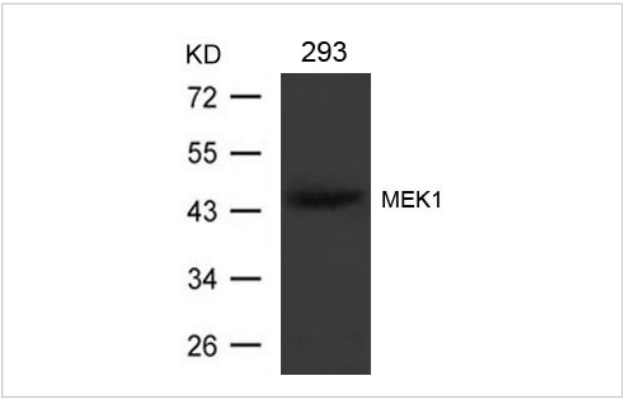
Overview

Product Name	MEK1(Ab-221) Antibody
Host Species	Rabbit
Clonality	Polyclonal
Applications	WB IHC
Species Reactivity	Hu Ms Rt
Immunogen Type	Peptide-KLH
Target Name	MEK1
Alternative Names	ERK activator kinase 1; MAP kinase kinase 1; MAP2K1; MAPK/ERK kinase 1; MAPKK 1

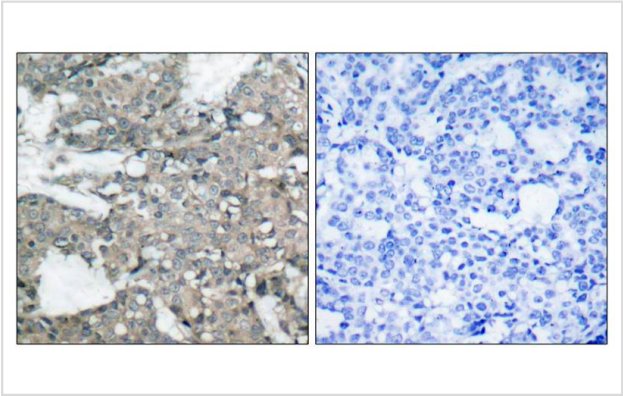
Application Details

Predicted MW: 45kd
Western blotting: 1:500~1:1000
Immunohistochemistry: 1:50~1:100

Images



Western blot analysis of extracts from 293 cells using MEK1(Ab-221) Antibody #21175



Immunohistochemical analysis of paraffin-embedded human breast carcinoma tissue using MEK1(Ab-221) Antibody #21175(left) or the same antibody preincubated with blocking peptide(right).

Descriptions

Immunogen	Peptide sequence around aa.219~223 (A-N-S-F-V) derived from Human MEK1.
Specificity	The antibody detects endogenous level of total MEK1 protein.
Purification	Antibodies were produced by immunizing rabbits with synthetic peptide and KLH conjugates. Antibodies were purified by affinity-chromatography using epitope-specific peptide.
Formulation	Supplied at 1.0mg/mL in phosphate buffered saline (without Mg ²⁺ and Ca ²⁺), pH 7.4, 150mM NaCl, 0.02% sodium azide and 50% glycerol.
Storage	Store at -20°C for long term preservation (recommended). Store at 4°C for short term use.
Accession NO.	Swiss-Prot: Q02750NCBI Protein: NP_002746.1

Related Information

Catalyzes the concomitant phosphorylation of a threonine and a tyrosine residue in a Thr-Glu-Tyr sequence located in MAP kinases. Activates ERK1 and ERK2 MAP kinases.

Zebisch A, et al. (2006) Cancer Res; 66(7): 3401-8.

Luciano BS, et al. (2006) J Biol Chem; 279(50): 52117-23.

Wang X, et al. (2003) Oncogene; 22(1): 109-16.

Gopalbhai K, et al. (2003) J Biol Chem; 278(10): 8118-25.

Ling MT, et al. (2002) Oncogene; 21(55): 8498-505.

Note: This product is for in vitro research use only and is not intended for use in humans or animals.