

Src(Ab-529) Antibody

Catalog No: #21168



Package Size: #21168-1 50ul #21168-2 100ul #21168-4 25ul

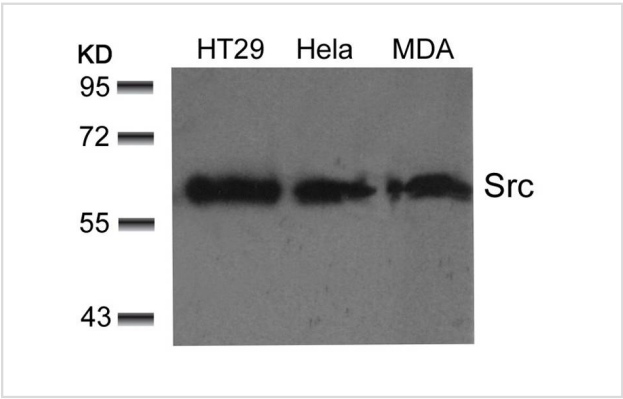
Overview

Product Name	Src(Ab-529) Antibody
Host Species	Rabbit
Clonality	Polyclonal
Applications	WB IHC
Species Reactivity	Hu Ms Rt
Immunogen Type	Peptide-KLH
Target Name	Src
Alternative Names	C-SRC; SRC1;

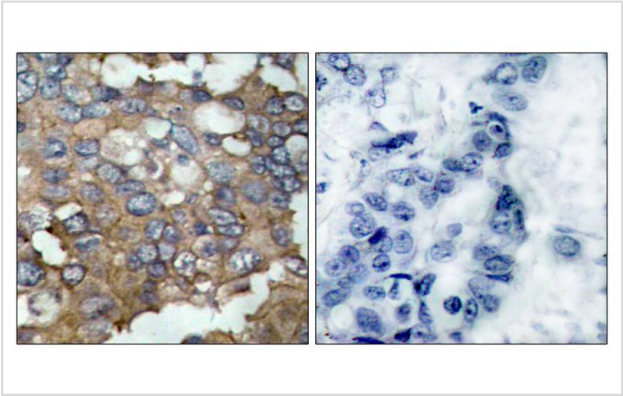
Application Details

Predicted MW: 60kd
Western blotting: 1:500~1:1000
Immunohistochemistry: 1:50~1:100

Images



Western blot analysis of extracts from HT29, HeLa and MDA cells using Src(Ab-529) Antibody #21168.



Immunohistochemical analysis of paraffin-embedded human breast carcinoma tissue using Src(Ab-529) Antibody #21168(left) or the same antibody preincubated with blocking peptide(right).

Descriptions

Immunogen	Peptide sequence around aa. 527~531 (P-Q-Y-Q-P) derived from Human Src.
Specificity	The antibody detects endogenous level of total Src protein.
Purification	Antibodies were produced by immunizing rabbits with synthetic peptide and KLH conjugates. Antibodies were purified by affinity-chromatography using epitope-specific peptide.
Formulation	Supplied at 1.0mg/mL in phosphate buffered saline (without Mg ²⁺ and Ca ²⁺), pH 7.4, 150mM NaCl, 0.02% sodium azide and 50% glycerol.
Storage	Store at -20°C for long term preservation (recommended). Store at 4°C for short term use.
Accession NO.	Swiss-Prot: P12931NCBI Protein: NP_005408.1

Related Information

proto-oncogenic cytoplasmic tyrosine kinase of the SRC family. Highly expressed in certain fully differentiated cells such as neurons, platelets and macrophages. Phosphorylation of an activation loop tyrosine activates the enzyme; phosphorylation of a tyrosine in the C-terminus by Csk inhibits the enzyme.

Pyper J.M., (1985) Mol. Cell. Biol. 5:831-838

Pyper J.M.(1990) Mol. Cell. Biol. 10:2035-2040

Xu W., (1997).Nature 385:595-602

Benes C.H., (2005) Cell 121:271-280

Note: This product is for in vitro research use only and is not intended for use in humans or animals.