

cofilin(Ab-3) Antibody

Catalog No: #21164



Package Size: #21164-1 50ul #21164-2 100ul #21164-4 25ul

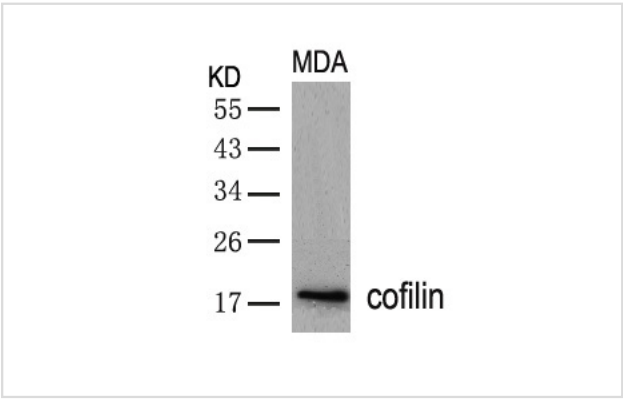
Overview

Product Name	cofilin(Ab-3) Antibody
Host Species	Rabbit
Clonality	Polyclonal
Applications	WB IHC
Species Reactivity	Hu Ms Rt
Immunogen Type	Peptide-KLH
Target Name	cofilin
Alternative Names	CFL; CFL1; COF1; Cofilin;

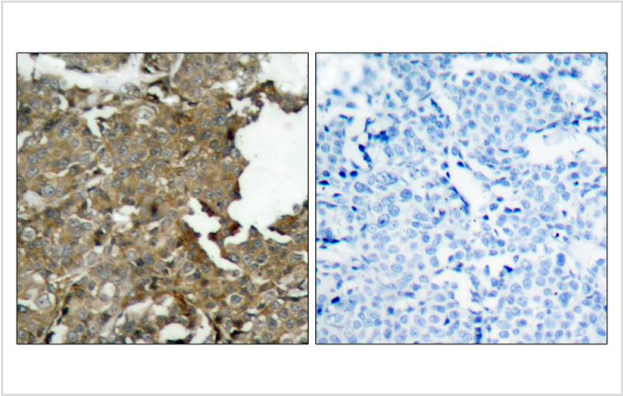
Application Details

Predicted MW: 19kd
Western blotting: 1:500~1:1000
Immunohistochemistry: 1:50~1:100

Images



Western blot analysis of extracts from MDA cells using cofilin(Ab-3) Antibody #21164.



Immunohistochemical analysis of paraffin-embedded human breast carcinoma tissue using cofilin(Ab-3) Antibody #21164(left) or the same antibody preincubated with blocking peptide(right).

Descriptions

Immunogen	Peptide sequence around aa. 1~5 (M-A-S-G-V) derived from Human cofilin.
Specificity	The antibody detects endogenous level of total cofilin protein.
Purification	Antibodies were produced by immunizing rabbits with synthetic peptide and KLH conjugates. Antibodies were purified by affinity-chromatography using epitope-specific peptide.
Formulation	Supplied at 1.0mg/mL in phosphate buffered saline (without Mg ²⁺ and Ca ²⁺), pH 7.4, 150mM NaCl, 0.02% sodium azide and 50% glycerol.
Storage	Store at -20°C for long term preservation (recommended). Store at 4°C for short term use.
Accession NO.	Swiss-Prot: P23528NCBI Protein: NP_000213.1

Related Information

Controls reversibly actin polymerization and depolymerization in a pH-sensitive manner. It has the ability to bind G- and F-actin in a 1:1 ratio of cofilin to actin. It is the major component of intranuclear and cytoplasmic actin rods.

Kobayashi M, et al. (2006) EMBO J 25(4): 713-26.

Wang Y, et al. (2005) Biol Chem 280(13): 12683-9.

Smith-Beckerman DM, et al. (2005) Mol Cell Proteomics: 156-68.

Note: This product is for in vitro research use only and is not intended for use in humans or animals.