

cdc25A(Ab-76) Antibody

Catalog No: #21163



Package Size: #21163-1 50ul #21163-2 100ul #21163-4 25ul

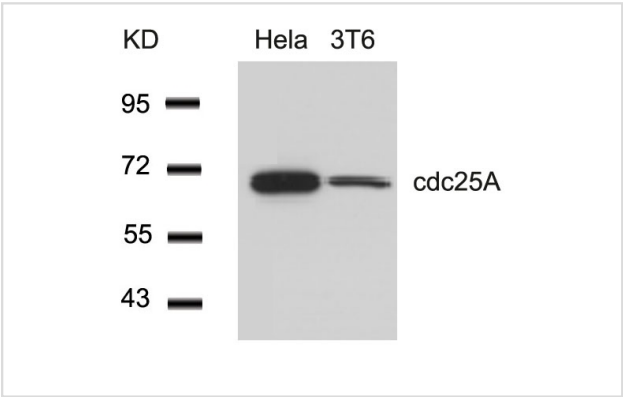
Overview

| | |
|--------------------|------------------------|
| Product Name | cdc25A(Ab-76) Antibody |
| Host Species | Rabbit |
| Clonality | Polyclonal |
| Applications | WB |
| Species Reactivity | Hu Ms Rt |
| Immunogen Type | Peptide-KLH |
| Target Name | cdc25A |
| Alternative Names | CDC25M3; MPIP1; |

Application Details

| |
|--------------------------------|
| Predicted MW: 70kd |
| Western blotting: 1:500~1:1000 |

Images



Western blot analysis of extracts from HeLa and 3T6 cells using cdc25A(Ab-76) Antibody #21163.

Descriptions

| | |
|---------------|---|
| Immunogen | Peptide sequence around aa. 73~77 (M-G-S-S-E) derived from Human cdc25A. |
| Specificity | The antibody detects endogenous level of total cdc25A protein. |
| Purification | Antibodies were produced by immunizing rabbits with synthetic peptide and KLH conjugates. Antibodies were purified by affinity-chromatography using epitope-specific peptide. |
| Formulation | Supplied at 1.0mg/mL in phosphate buffered saline (without Mg2+ and Ca2+), pH 7.4, 150mM NaCl, 0.02% sodium azide and 50% glycerol. |
| Storage | Store at -20°C for long term preservation (recommended). Store at 4°C for short term use. |
| Accession NO. | Swiss-Prot: P30304NCBI Protein: NP_001780.2 |

Related Information

Tyrosine protein phosphatase which functions as a dosage-dependent inducer of mitotic progression. Directly dephosphorylates CDC2 and stimulates its kinase activity. Also dephosphorylates CDK2 in complex with cyclin E, in vitro.

Jin J, et al. (2003) Genes 17(24): 3062-74.

Shimuta K, et al. (2002) EMBO J 21(14): 3694-703.

Note: This product is for in vitro research use only and is not intended for use in humans or animals.