

FKHR(Ab-319) Antibody

Catalog No: #21161



Package Size: #21161-1 50ul #21161-2 100ul #21161-4 25ul

Overview

Product Name	FKHR(Ab-319) Antibody
Host Species	Rabbit
Clonality	Polyclonal
Applications	WB IHC
Species Reactivity	Hu Ms Rt
Immunogen Type	Peptide-KLH
Target Name	FKHR
Alternative Names	FKHR; FOXO1;

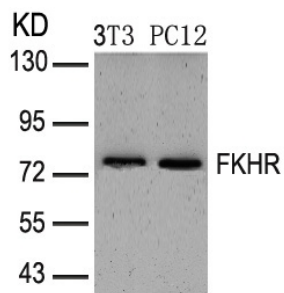
Application Details

Predicted MW: 78-82 kd

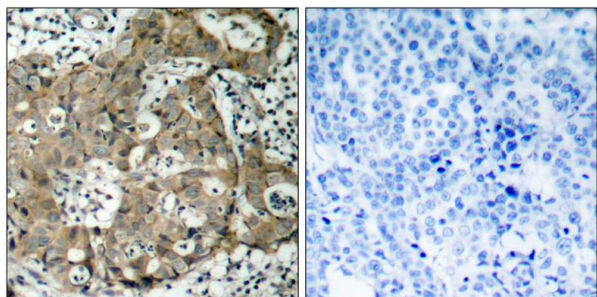
Western blotting: 1:500~1:1000

Immunohistochemistry: 1:50~1:100

Images



Western blot analysis of extracts from 3T3 and PC12 cells using FKHR(Ab-319) Antibody #21161.



Immunohistochemical analysis of paraffin-embedded human breast carcinoma tissue using FKHR(Ab-319) Antibody #21161(left) or the same antibody preincubated with blocking peptide(right).

Descriptions

Immunogen	Peptide sequence around aa. 317~321 (T-S-S-N-A) derived from Human FKHR.
Specificity	The antibody detects endogenous level of total FKHR protein.
Purification	Antibodies were produced by immunizing rabbits with synthetic peptide and KLH conjugates. Antibodies were purified by affinity-chromatography using epitope-specific peptide.
Formulation	Supplied at 1.0mg/mL in phosphate buffered saline (without Mg ²⁺ and Ca ²⁺), pH 7.4, 150mM NaCl, 0.02% sodium azide and 50% glycerol.
Storage	Store at -20°C for long term preservation (recommended). Store at 4°C for short term use.
Accession NO.	Swiss-Prot: Q12778NCBI Protein: NP_002006.2

Related Information

Transcription factor.

Note: This product is for in vitro research use only and is not intended for use in humans or animals.