

# Akt2(Ab-474) Antibody

Catalog No: #21155



Package Size: #21155-1 50ul #21155-2 100ul #21155-4 25ul

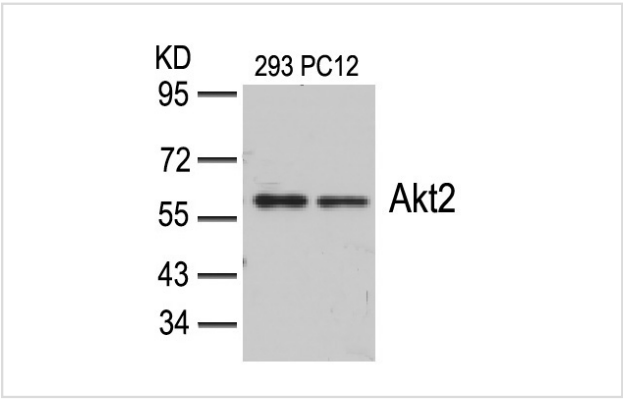
## Overview

Product Name	Akt2(Ab-474) Antibody
Host Species	Rabbit
Clonality	Polyclonal
Applications	WB IHC
Species Reactivity	Hu Ms Rt
Immunogen Type	Peptide-KLH
Target Name	Akt2
Alternative Names	PKB beta; Akt-2; Protein kinase B; RAC-PK-beta;

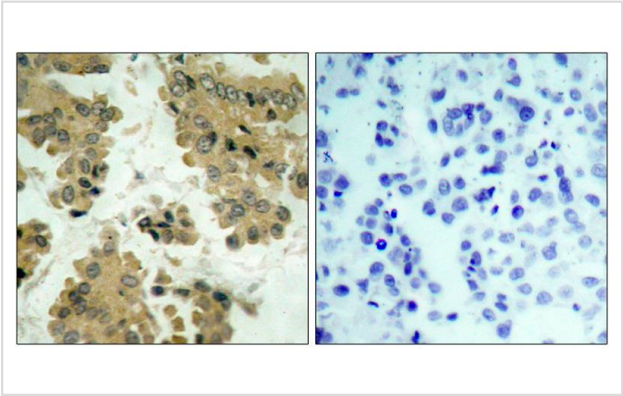
## Application Details

Predicted MW: 60kd
Western blotting: 1:500~1:1000
Immunohistochemistry: 1:50~1:100

## Images



Western blot analysis of extracts from 293 and PC12 cells using Akt2(Ab-474) Antibody #21155.



Immunohistochemical analysis of paraffin-embedded human lung carcinoma tissue using Akt2(Ab-474) Antibody #21155(left) or the same antibody preincubated with blocking peptide(right).

## Descriptions

Immunogen	Peptide sequence around aa. 472~476 (Q-F-S-Y-S) derived from Human Akt2.
Specificity	The antibody detects endogenous level of total Akt2 protein.
Purification	Antibodies were produced by immunizing rabbits with synthetic peptide and KLH conjugates. Antibodies were purified by affinity-chromatography using epitope-specific peptide.
Formulation	Supplied at 1.0mg/mL in phosphate buffered saline (without Mg <sup>2+</sup> and Ca <sup>2+</sup> ), pH 7.4, 150mM NaCl, 0.02% sodium azide and 50% glycerol.
Storage	Store at -20°C for long term preservation (recommended). Store at 4°C for short term use.
Accession NO.	Swiss-Prot: P31751NCBI Protein: NP_001617.1

## Related Information

General protein kinase capable of phosphorylating several known proteins.

Note: This product is for in vitro research use only and is not intended for use in humans or animals.