

CDC2(Ab-161) Antibody

Catalog No: #21152



Package Size: #21152-1 50ul #21152-2 100ul #21152-4 25ul

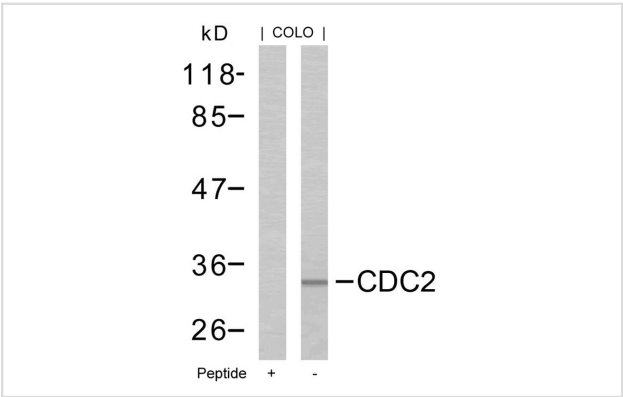
Overview

Product Name	CDC2(Ab-161) Antibody
Host Species	Rabbit
Clonality	Polyclonal
Applications	WB IF
Species Reactivity	Hu Ms Rt
Immunogen Type	Peptide-KLH
Target Name	CDC2
Alternative Names	CDC28; CDC2A; CDK1; Cyclin-dependent kinase 1;

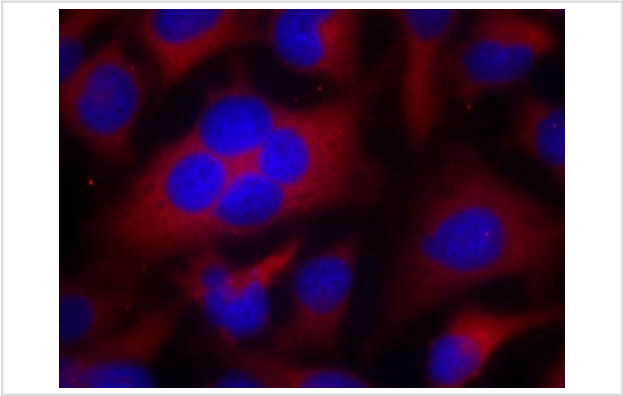
Application Details

Predicted MW: 34kd
Western blotting: 1:500~1:1000
Immunofluorescence: 1:100~1:200

Images



Western blot analysis of extracts from COLO cells using CDC2(Ab-161) Antibody #21152 and the same antibody preincubated with blocking peptide.



Immunofluorescence staining of methanol-fixed HeLa cells using CDC2(Ab-161) Antibody #21152.

Descriptions

Immunogen	Peptide sequence around aa.159~163 (T-Y-T-H-E) derived from Human CDC2.
Specificity	The antibody detects endogenous level of total CDC2 protein.
Purification	Antibodies were produced by immunizing rabbits with synthetic peptide and KLH conjugates. Antibodies were purified by affinity-chromatography using epitope-specific peptide.
Formulation	Supplied at 1.0mg/mL in phosphate buffered saline (without Mg ²⁺ and Ca ²⁺), pH 7.4, 150mM NaCl, 0.02% sodium azide and 50% glycerol.
Storage	Store at -20°C for long term preservation (recommended). Store at 4°C for short term use.
Accession NO.	Swiss-Prot: P06493NCBI Protein: NP_001163877.1

Related Information

Plays a key role in the control of the eukaryotic cell cycle. It is required in higher cells for entry into S-phase and mitosis. p34 is a component of the kinase complex that phosphorylates the repetitive C-terminus of RNA polymerase II.

Ukomadu C, et al.(2003) J Biol Chem; 278(7): 4840-6

Morris MC, et al.(2002)J Biol Chem; 277(26): 23847-53

Brown NR, et al.(1999)J Biol Chem; 274(13): 8746-56

Liu Y, et al.(2004) J Biol Chem; 279(6): 4507-14

Note: This product is for in vitro research use only and is not intended for use in humans or animals.