

# HSP27(Ab-15) Antibody

Catalog No: #21144



Package Size: #21144-1 50ul #21144-2 100ul #21144-4 25ul

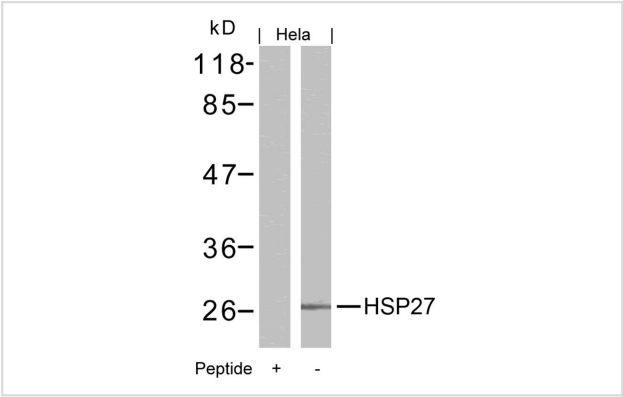
## Overview

Product Name	HSP27(Ab-15) Antibody
Host Species	Rabbit
Clonality	Polyclonal
Applications	WB IHC
Species Reactivity	Hu
Immunogen Type	Peptide-KLH
Target Name	HSP27
Alternative Names	28 kDa heat shock protein; Estrogen-regulated 24 kDa protein; Growth-related 25 kDa protein; HSP 27; HSP25

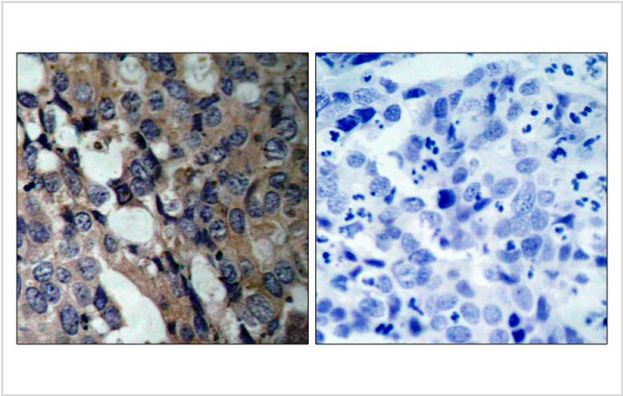
## Application Details

Predicted MW: 27kd
Western blotting: 1:500~1:1000
Immunohistochemistry: 1:50~1:100

## Images



Western blot analysis of extracts from Hela cells using HSP27(Ab-15) Antibody #21144 and the same antibody preincubated with blocking peptide.



Immunohistochemical analysis of paraffin-embedded human breast carcinoma tissue using HSP27(Ab-15) Antibody #21144(left) or the same antibody preincubated with blocking peptide(right).

## Descriptions

Immunogen	Peptide sequence around aa.13~17 (G-P-S-W-D) derived from Human HSP27.
Specificity	The antibody detects endogenous level of total HSP27 protein.
Purification	Antibodies were produced by immunizing rabbits with synthetic peptide and KLH conjugates. Antibodies were purified by affinity-chromatography using epitope-specific peptide.
Formulation	Supplied at 1.0mg/mL in phosphate buffered saline (without Mg <sup>2+</sup> and Ca <sup>2+</sup> ), pH 7.4, 150mM NaCl, 0.02% sodium azide and 50% glycerol.
Storage	Store at -20°C for long term preservation (recommended). Store at 4°C for short term use.
Accession NO.	Swiss-Prot: P04792NCBI Protein: NP_001531.1

## Related Information

Involved in stress resistance and actin organization.

Note: This product is for in vitro research use only and is not intended for use in humans or animals.