

p90RSK(Ab-348) Antibody

Catalog No: #21135



Package Size: #21135-1 50ul #21135-2 100ul #21135-4 25ul

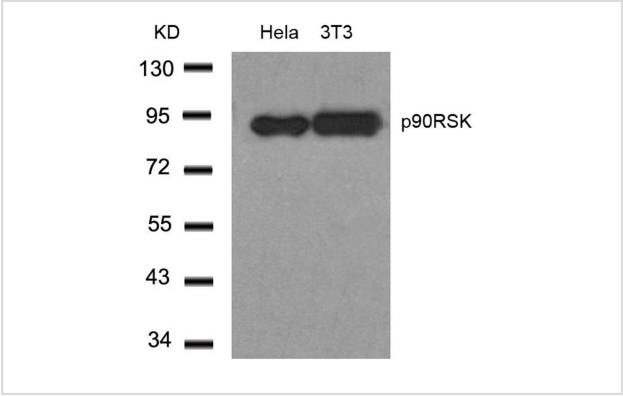
Overview

Product Name	p90RSK(Ab-348) Antibody
Host Species	Rabbit
Clonality	Polyclonal
Applications	WB IF
Species Reactivity	Hu Ms Rt
Immunogen Type	Peptide-KLH
Target Name	p90RSK
Alternative Names	KS6A1; MAPKAP-K1a; RPS6KA1; RSK-1; RSK1

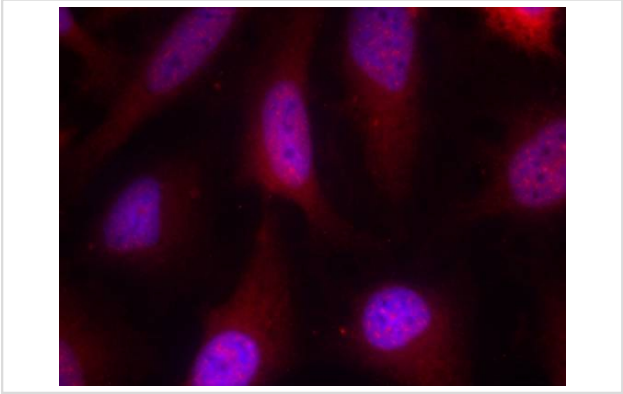
Application Details

Predicted MW: 90kd
Western blotting: 1:500~1:1000
Immunofluorescence: 1:100~1:200

Images



Western blot analysis of extracts from HeLa and 3T3 cells using p90RSK(Ab-348) Antibody #21135.



Immunofluorescence staining of methanol-fixed HeLa cells using p90RSK(Ab-348) Antibody #21135.

Descriptions

Immunogen	Peptide sequence around aa.346~350 (S-R-T-P-R) derived from Human p90RSK.
Specificity	The antibody detects endogenous level of total p90RSK protein.
Purification	Antibodies were produced by immunizing rabbits with synthetic peptide and KLH conjugates. Antibodies were purified by affinity-chromatography using epitope-specific peptide.
Formulation	Supplied at 1.0mg/mL in phosphate buffered saline (without Mg ²⁺ and Ca ²⁺), pH 7.4, 150mM NaCl, 0.02% sodium azide and 50% glycerol.
Storage	Store at -20°C for long term preservation (recommended). Store at 4°C for short term use.
Accession NO.	Swiss-Prot: Q15418NCBI Protein: NP_001006666.1

Related Information

Serine/threonine kinase that may play a role in mediating the growth-factor and stress induced activation of the transcription factor CREB.

Silverman E, et al. Mol Cell Biol. 2004 Dec; 24(24): 10573-10583.

Andrew D, et al. Biochem J. 2006 February 1; 393(Pt 3): 715

Note: This product is for in vitro research use only and is not intended for use in humans or animals.