

# SEK1/MKK4(Ab-80) Antibody

Catalog No: #21132



Package Size: #21132-1 50ul #21132-2 100ul #21132-4 25ul

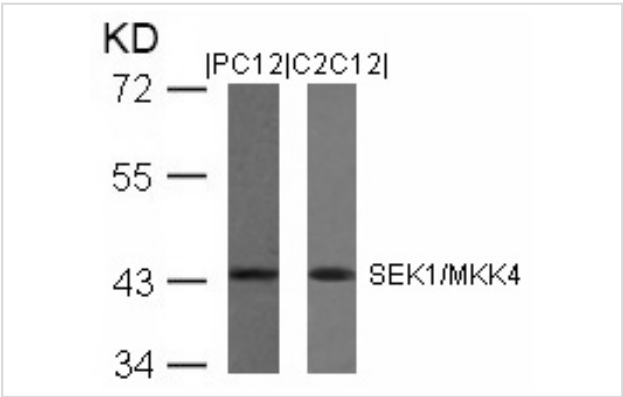
## Overview

|                    |                                                  |
|--------------------|--------------------------------------------------|
| Product Name       | SEK1/MKK4(Ab-80) Antibody                        |
| Host Species       | Rabbit                                           |
| Clonality          | Polyclonal                                       |
| Applications       | WB IHC                                           |
| Species Reactivity | Hu Ms Rt                                         |
| Immunogen Type     | Peptide-KLH                                      |
| Target Name        | SEK1/MKK4                                        |
| Alternative Names  | JNKK; JNKK1; MAP2K4; MAPK/ERK kinase 4; kinase 4 |

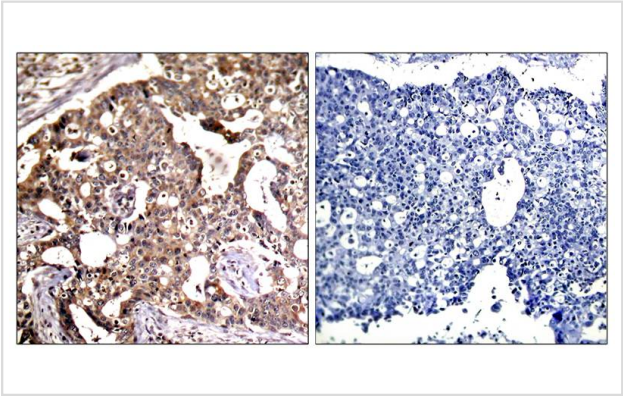
## Application Details

|                                  |
|----------------------------------|
| Predicted MW: 44kd               |
| Western blotting: 1:500~1:1000   |
| Immunohistochemistry: 1:50~1:100 |

## Images



Western blot analysis of extracts from PC12 and C2C12 cells using SEK1/MKK4(Ab-80) Antibody #21132.



Immunohistochemical analysis of paraffin-embedded human breast carcinoma tissue using SEK1/MKK4(Ab-80) Antibody #21132(left) or the same antibody preincubated with blocking peptide(right).

## Descriptions

|               |                                                                                                                                                                               |
|---------------|-------------------------------------------------------------------------------------------------------------------------------------------------------------------------------|
| Immunogen     | Peptide sequence around aa. 78~82 (T-H-S-I-E) derived from Human SEK1/MKK4.                                                                                                   |
| Specificity   | The antibody detects endogenous level of total SEK1/MKK4 protein.                                                                                                             |
| Purification  | Antibodies were produced by immunizing rabbits with synthetic peptide and KLH conjugates. Antibodies were purified by affinity-chromatography using epitope-specific peptide. |
| Formulation   | Supplied at 1.0mg/mL in phosphate buffered saline (without Mg <sup>2+</sup> and Ca <sup>2+</sup> ), pH 7.4, 150mM NaCl, 0.02% sodium azide and 50% glycerol.                  |
| Storage       | Store at -20°C for long term preservation (recommended). Store at 4°C for short term use.                                                                                     |
| Accession NO. | Swiss-Prot: P45985NCBI Protein: NP_003001.1                                                                                                                                   |

## Related Information

Dual specificity kinase that activates the JUN kinases MAPK8 (JNK1) and MAPK9 (JNK2) as well as MAPK14 (p38) but not MAPK1 (ERK2) or MAPK3 (ERK1).

Park HS, et al. (2002) J Biol Chem; 277(4): 2573-8.

Note: This product is for in vitro research use only and is not intended for use in humans or animals.