

SEK1/MKK4(Ab-261) Antibody

Catalog No: #21131



Package Size: #21131-1 50ul #21131-2 100ul #21131-4 25ul

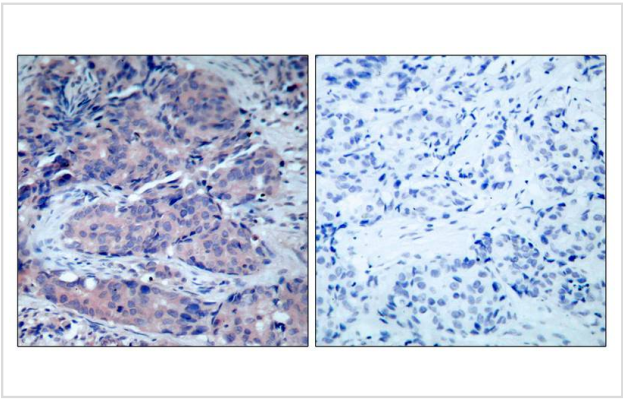
Overview

Product Name	SEK1/MKK4(Ab-261) Antibody
Host Species	Rabbit
Clonality	Polyclonal
Applications	IHC IF
Species Reactivity	Hu Ms Rt
Immunogen Type	Peptide-KLH
Target Name	SEK1/MKK4
Alternative Names	JNKK; JNKK1; MAP2K4; MAPK/ERK kinase 4; MAPKK 4

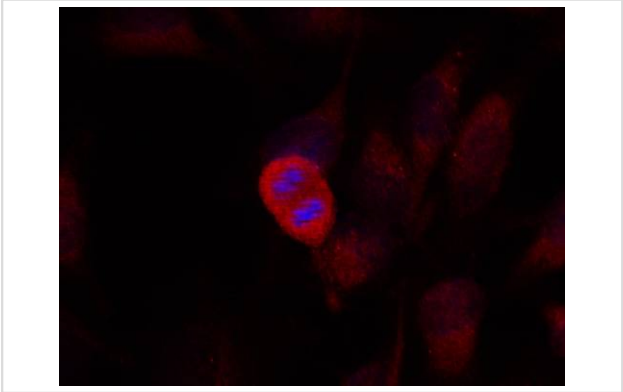
Application Details

Predicted MW: 44kd
Immunohistochemistry: 1:50~1:100
Immunofluorescence: 1:100~1:200

Images



Immunohistochemical analysis of paraffin-embedded human breast carcinoma tissue using SEK1/MKK4(Ab-261) Antibody #21131(left) or the same antibody preincubated with blocking peptide(right).



Immunofluorescence staining of methanol-fixed HeLa cells using SEK1/MKK4(Ab-261) Antibody #21131.

Descriptions

Immunogen	Peptide sequence around aa.259~263 (A-K-T-R-D) derived from Human SEK1/MKK4.
Specificity	The antibody detects endogenous level of total SEK1/MKK4 protein.
Purification	Antibodies were produced by immunizing rabbits with synthetic peptide and KLH conjugates. Antibodies were purified by affinity-chromatography using epitope-specific peptide.
Formulation	Supplied at 1.0mg/mL in phosphate buffered saline (without Mg ²⁺ and Ca ²⁺), pH 7.4, 150mM NaCl, 0.02% sodium azide and 50% glycerol.
Storage	Store at -20°C for long term preservation (recommended). Store at 4°C for short term use.
Accession NO.	Swiss-Prot: P45985NCBI Protein: NP_003001.1

Related Information

Dual specificity kinase that activates the JUN kinases MAPK8 (JNK1) and MAPK9 (JNK2) as well as MAPK14 (p38) but not MAPK1 (ERK2) or MAPK3 (ERK1).

Wang W, et al. (2002) Mol Cell Biol; 22(10): 3389-403.

Leung IW, et al. (2001) J Biol Chem; 276(3): 1961-7.

Note: This product is for in vitro research use only and is not intended for use in humans or animals.