

# PKD/PKCm(Ab-738) Antibody

Catalog No: #21126



Package Size: #21126-1 50ul #21126-2 100ul #21126-4 25ul

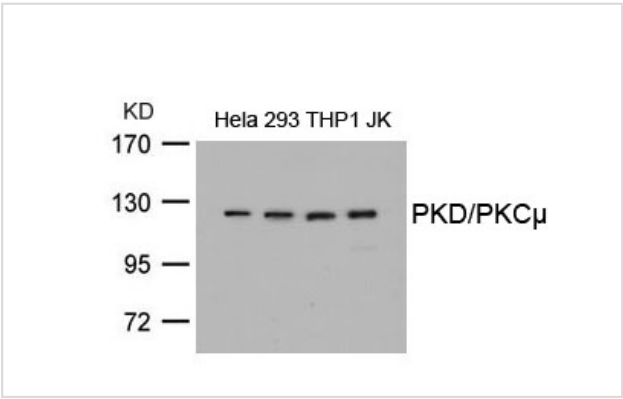
## Overview

Product Name	PKD/PKCm(Ab-738) Antibody
Host Species	Rabbit
Clonality	Polyclonal
Applications	WB IF
Species Reactivity	Hu Ms Rt
Immunogen Type	Peptide-KLH
Target Name	PKD/PKCm
Alternative Names	nPKC-D1; Protein kinase D; Protein kinase C mu type; nPKC-mu;

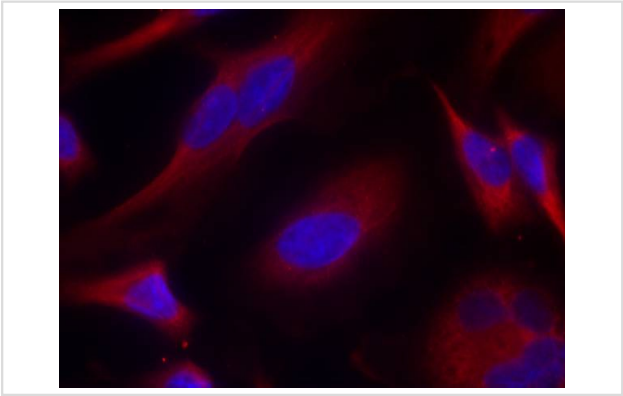
## Application Details

Predicted MW: 115kd
Western blotting: 1:500~1:1000
Immunofluorescence: 1:100~1:200

## Images



Western blot analysis of extracts from HeLa, 293, THP1 and JK cells using PKD/PKCm(Ab-738) Antibody #21126.



Immunofluorescence staining of methanol-fixed HeLa cells using PKD/PKCm(Ab-738) Antibody #21126.

## Descriptions

Immunogen	Peptide sequence around aa. 736~740 (E-K-S-F-R) derived from Human PKD/PKCm.
Specificity	The antibody detects endogenous level of total PKD/PKCm protein.
Purification	Antibodies were produced by immunizing rabbits with synthetic peptide and KLH conjugates. Antibodies were purified by affinity-chromatography using epitope-specific peptide.
Formulation	Supplied at 1.0mg/mL in phosphate buffered saline (without Mg <sup>2+</sup> and Ca <sup>2+</sup> ), pH 7.4, 150mM NaCl, 0.02% sodium azide and 50% glycerol.
Storage	Store at -20°C for long term preservation (recommended). Store at 4°C for short term use.
Accession NO.	Swiss-Prot: Q15139NCBI Protein: NP_002733.2

## Related Information

Converts transient diacylglycerol. (DAG) signals into prolonged physiological effects, downstream of PKC. Involved in resistance to oxidative stress through activation of NF-kappa-B.

Storz P, et al. Mol Cell Biol. 2004 Apr; 24(7): 2614-2626.

Storz P, et al. Mol Cell Biol. 2005 Oct; 25(19): 8520-8530.

Zhang W, et al. J Biol Chem 2005 May 13; 280(19): 19036-19044

**Note:** This product is for in vitro research use only and is not intended for use in humans or animals.