

# JAK1(Ab-1022) Antibody

Catalog No: #21119



Package Size: #21119-1 50ul #21119-2 100ul #21119-4 25ul

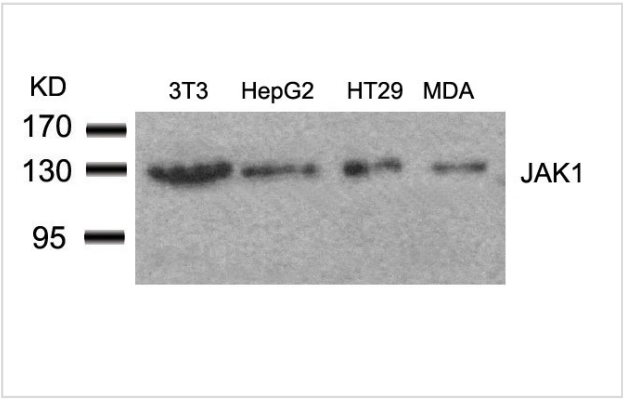
## Overview

Product Name	JAK1(Ab-1022) Antibody
Host Species	Rabbit
Clonality	Polyclonal
Applications	WB IHC
Species Reactivity	Hu Ms Rt
Immunogen Type	Peptide-KLH
Target Name	JAK1
Alternative Names	Janus kinase 1

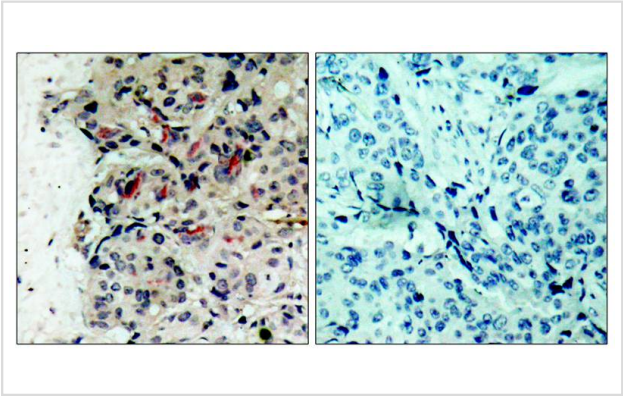
## Application Details

Predicted MW: 130kd
Western blotting: 1:500~1:1000
Immunohistochemistry: 1:50~1:100

## Images



Western blot analysis of extracts from 3T3, HepG2, HT29 and MDA cells using JAK1(Ab-1022) Antibody #21119.



Immunohistochemical analysis of paraffin-embedded human breast carcinoma tissue using JAK1(Ab-1022) Antibody #21119(left) or the same antibody preincubated with blocking peptide(right).

## Descriptions

Immunogen	Peptide sequence around aa. 1020~1024 (K-E-Y-Y-T) derived from Human JAK1.
Specificity	The antibody detects endogenous level of total JAK1 protein.
Purification	Antibodies were produced by immunizing rabbits with synthetic peptide and KLH conjugates. Antibodies were purified by affinity-chromatography using epitope-specific peptide.
Formulation	Supplied at 1.0mg/mL in phosphate buffered saline (without Mg <sup>2+</sup> and Ca <sup>2+</sup> ), pH 7.4, 150mM NaCl, 0.02% sodium azide and 50% glycerol.
Storage	Store at -20°C for long term preservation (recommended). Store at 4°C for short term use.
Accession NO.	Swiss-Prot: P23458NCBI Protein: NP_002218.2

## Related Information

Tyrosine kinase of the non-receptor type, involved in the IFN- $\alpha$ /beta/gamma signal pathway. Kinase partner for the interleukin (IL)-2 receptor.

Zheng H, et al. (2005) Mol Cell Proteomics. 4(6):721-730.

Wang R, et al. (2003) Arch Biochem Biophys. 410(1): 7-15.

Note: This product is for in vitro research use only and is not intended for use in humans or animals.