

CDK2(Ab-160) Antibody

Catalog No: #21111



Package Size: #21111-1 50ul #21111-2 100ul #21111-4 25ul

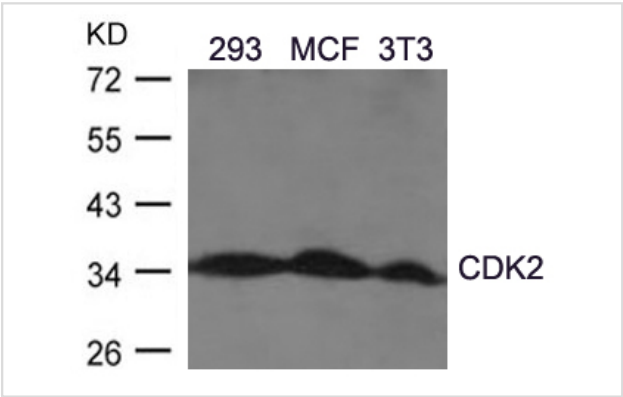
Overview

Product Name	CDK2(Ab-160) Antibody
Host Species	Rabbit
Clonality	Polyclonal
Applications	WB
Species Reactivity	Hu Ms Rt
Immunogen Type	Peptide-KLH
Target Name	CDK2
Alternative Names	kinase Cdk2; p33 protein kinase;

Application Details

Predicted MW: 34kd
Western blotting: 1:500~1:1000

Images



Western blot analysis of extracts from 293, MCF, 3T3 cells using CDK2(Ab-160) Antibody #21111.

Descriptions

Immunogen	Peptide sequence around aa.158~162 (T-Y-T-H-E) derived from Human CDK2.
Specificity	The antibody detects endogenous level of total CDK2 protein.
Purification	Antibodies were produced by immunizing rabbits with synthetic peptide and KLH conjugates. Antibodies were purified by affinity-chromatography using epitope-specific peptide.
Formulation	Supplied at 1.0mg/mL in phosphate buffered saline (without Mg2+ and Ca2+), pH 7.4, 150mM NaCl, 0.02% sodium azide and 50% glycerol.
Storage	Store at -20°C for long term preservation (recommended). Store at 4°C for short term use.
Accession NO.	Swiss-Prot: P24941NCBI Protein: NP_001789.2

Related Information

Involved in the control of the cell cycle. Interacts with cyclins A, B1, B3, D, or E. Activity of CDK2 is maximal during S phase and G2.

Ukomadu C, et al.(2003) J Biol Chem; 278(7): 4840-6

Morris MC, et al.(2002)J Biol Chem; 277(26): 23847-53

Brown NR, et al.(1999)J Biol Chem; 274(13): 8746-56

Liu Y, et al.(2004) J Biol Chem; 279(6): 4507-14

Note: This product is for in vitro research use only and is not intended for use in humans or animals.