

Paxillin(Ab-118) Antibody

Catalog No: #21107



Package Size: #21107-1 50ul #21107-2 100ul #21107-4 25ul

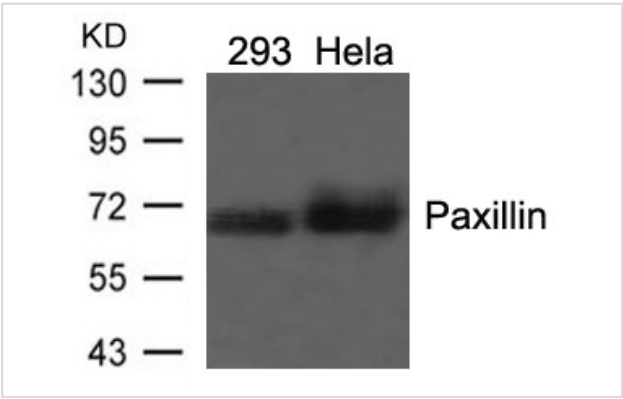
Overview

Product Name	Paxillin(Ab-118) Antibody
Host Species	Rabbit
Clonality	Polyclonal
Applications	WB IHC
Species Reactivity	Hu Ms Rt
Immunogen Type	Peptide-KLH
Target Name	Paxillin
Alternative Names	FLJ16691; PXN;

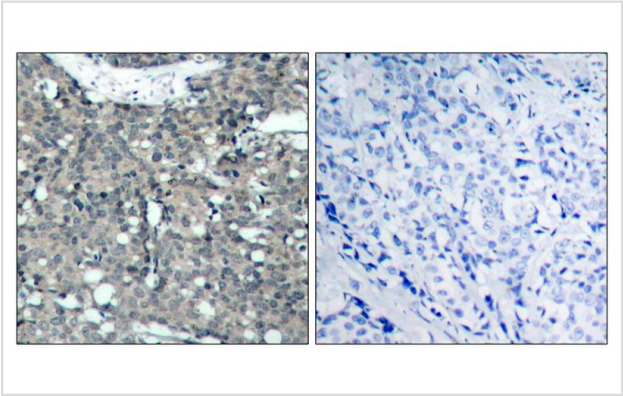
Application Details

Predicted MW: 68kd
Western blotting: 1:500~1:1000
Immunohistochemistry: 1:50~1:100

Images



Western blot analysis of extracts from 293 and HeLa cells using Paxillin(Ab-118) Antibody #21107.



Immunohistochemical analysis of paraffin-embedded human breast carcinoma tissue using Paxillin(Ab-118) Antibody #21107(left) or the same antibody preincubated with blocking peptide(right).

Descriptions

Immunogen	Peptide sequence around aa. 116~120 (H-V-Y-S-F) derived from Human Paxillin.
Specificity	The antibody detects endogenous level of total Paxillin protein.
Purification	Antibodies were produced by immunizing rabbits with synthetic peptide and KLH conjugates. Antibodies were purified by affinity-chromatography using epitope-specific peptide.
Formulation	Supplied at 1.0mg/mL in phosphate buffered saline (without Mg ²⁺ and Ca ²⁺), pH 7.4, 150mM NaCl, 0.02% sodium azide and 50% glycerol.
Storage	Store at -20°C for long term preservation (recommended). Store at 4°C for short term use.
Accession NO.	Swiss-Prot: P49023NCBI Protein: NP_001074324.1

Related Information

Cytoskeletal protein involved in actin-membrane attachment at sites of cell adhesion to the extracellular matrix (focal adhesion).

Tao WA, et al.(2005)Nat Methods.2(8): 591-598.

Zhang Y, et al.(2005) Mol Cell Proteomics.4(9): 1240-1250.

Sanders MA, et al.(2005)J Biol Chem.280(25): 23516-23522.

Rush J, et al.(2004) Nat Biotechnol. 23(1): 94-101.

Note: This product is for in vitro research use only and is not intended for use in humans or animals.