

Ezrin(Ab-353) Antibody

Catalog No: #21094



Package Size: #21094-1 50ul #21094-2 100ul #21094-4 25ul

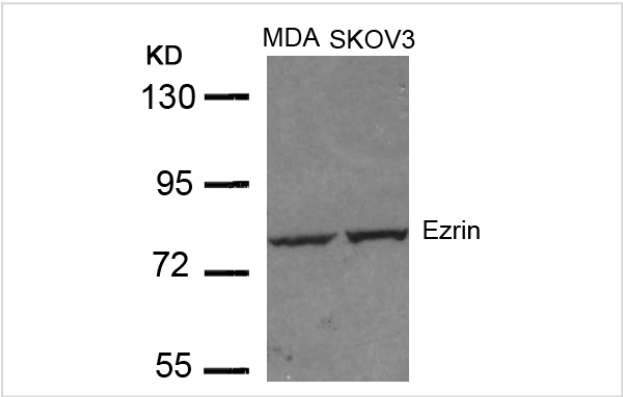
Overview

Product Name	Ezrin(Ab-353) Antibody
Host Species	Rabbit
Clonality	Polyclonal
Applications	WB
Species Reactivity	Human Mouse
Immunogen Type	Peptide-KLH
Target Name	Ezrin
Alternative Names	Cytovillin; EZRI; VIL2; Villin 2; p81

Application Details

Predicted MW: 81kd
Western blotting: 1:500~1:1000

Images



Western blot analysis of extracts from MDA and SKOV3 cells using Ezrin(Ab-353) Antibody #21094.

Descriptions

Immunogen	Peptide sequence around aa.351~355 (Q-D-Y-E-E) derived from Human EZRIN.
Specificity	The antibody detects endogenous level of total Ezrin protein.
Purification	Antibodies were produced by immunizing rabbits with synthetic peptide and KLH conjugates. Antibodies were purified by affinity-chromatography using epitope-specific peptide.
Formulation	Supplied at 1.0mg/mL in phosphate buffered saline (without Mg2+ and Ca2+), pH 7.4, 150mM NaCl, 0.02% sodium azide and 50% glycerol.
Storage	Store at -20°C for long term preservation (recommended). Store at 4°C for short term use.
Accession NO.	Swiss-Prot: P15311NCBI Protein: NP_001104547.1

Related Information

Probably involved in connections of major cytoskeletal structures to the plasma membrane. In epithelial cells, required for the formation of microvilli and membrane ruffles on the apical pole. Along with PLEKHG6, required for normal macropinocytosis.

Zhao H, et al. (2004) Proc Natl Acad Sci U S A 101 (25): 9485-90.

Wang Q, et al. (2003) J Biol Chem 278(48): 47731-43.

Gautreau A, et al. (1999) Proc Natl Acad Sci U S A: 96(13): 7300-5.

Crepaldi T, et al. (1997) J Cell Biol: 28; 138(2): 423-34.

Note: This product is for in vitro research use only and is not intended for use in humans or animals.