

IGF-1R(Ab-1165/1166) Antibody

Catalog No: #21081



Package Size: #21081-1 50ul #21081-2 100ul #21081-4 25ul

Overview

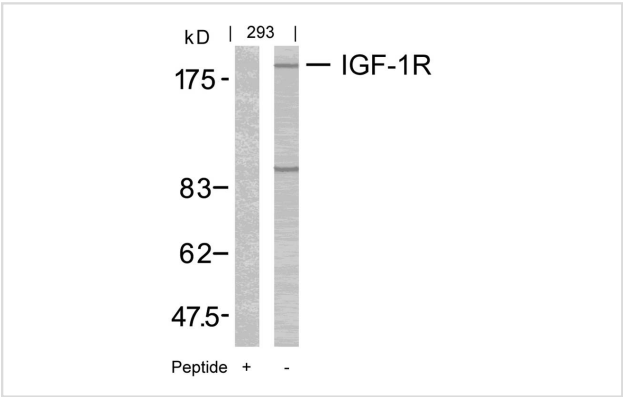
Product Name	IGF-1R(Ab-1165/1166) Antibody
Host Species	Rabbit
Clonality	Polyclonal
Applications	WB
Species Reactivity	Hu Ms Rt
Immunogen Type	Peptide-KLH
Target Name	IGF-1R
Alternative Names	Insulin-like growth factor I receptor; CD221; IGF1R; kinase IGF1R;

Application Details

Predicted MW: 200 95 kd

Western blotting: 1:500~1:1000

Images



Western blot analysis of extracts from 293 cells using IGF-1R(Ab-1165/1166) Antibody #21081 and the same antibody preincubated with blocking peptide.

Descriptions

Immunogen	Peptide sequence around aa.1163~1167/1164~1168 (T-D-Y-Y-R-K) derived from Human IGF-1R .
Specificity	The antibody detects endogenous level of total IGF-1R protein.
Purification	Antibodies were produced by immunizing rabbits with synthetic peptide and KLH conjugates. Antibodies were purified by affinity-chromatography using epitope-specific peptide.
Formulation	Supplied at 1.0mg/mL in phosphate buffered saline (without Mg2+ and Ca2+), pH 7.4, 150mM NaCl, 0.02% sodium azide and 50% glycerol.
Storage	Store at -20°C for long term preservation (recommended). Store at 4°C for short term use.
Accession NO.	Swiss-Prot: P08069NCBI Protein: NP_000866.1

Related Information

This receptor binds insulin-like growth factor 1 (IGF1) with a high affinity and IGF2 with a lower affinity. It has a tyrosine-protein kinase activity, which is necessary for the activation of the IGF1-stimulated downstream signaling cascade. When present in a hybrid receptor with INSR, binds IGF1.

Li S, et al. (1994) J Biol Chem; 269(51): 32558-64.

Note: This product is for in vitro research use only and is not intended for use in humans or animals.