

VEGFR2(Ab-1175) Antibody

Catalog No: #21077



Package Size: #21077-1 50ul #21077-2 100ul #21077-4 25ul

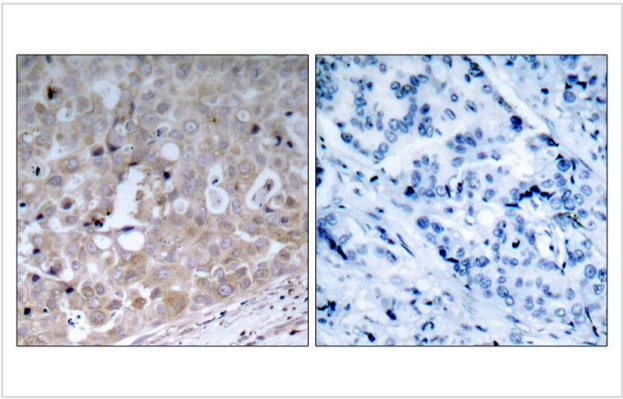
Overview

Product Name	VEGFR2(Ab-1175) Antibody
Host Species	Rabbit
Clonality	Polyclonal
Applications	WB IHC IF
Species Reactivity	Hu Ms Rt
Immunogen Type	Peptide-KLH
Target Name	VEGFR2
Alternative Names	FLK1; KDR; VGFR2; VGR2; kinase insert domain receptor

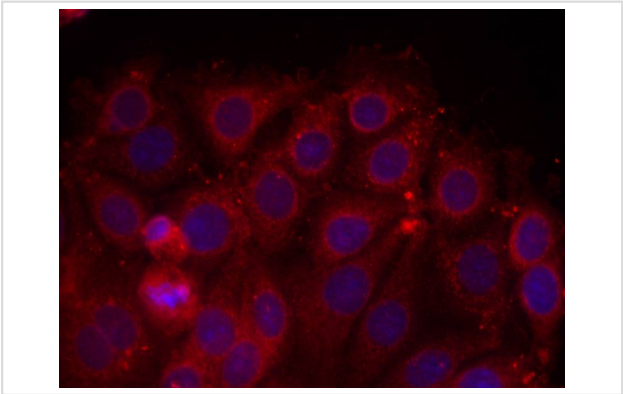
Application Details

Predicted MW: 230kd
Immunohistochemistry: 1:50~1:100
Immunofluorescence: 1:100~1:200

Images



Immunohistochemical analysis of paraffin-embedded human breast carcinoma tissue using VEGFR2(Ab-1175) Antibody #21077(left) or the same antibody preincubated with blocking peptide(right).



Immunofluorescence staining of methanol-fixed MCF cells using VEGFR2(Ab-1175) Antibody #21077.

Descriptions

Immunogen	Peptide sequence around aa.1173~1177 (K-D-Y-I-V) derived from Human VEGFR2.
Specificity	The antibody detects endogenous level of total VEGFR2 protein.
Purification	Antibodies were produced by immunizing rabbits with synthetic peptide and KLH conjugates. Antibodies were purified by affinity-chromatography using epitope-specific peptide.
Formulation	Supplied at 1.0mg/mL in phosphate buffered saline (without Mg ²⁺ and Ca ²⁺), pH 7.4, 150mM NaCl, 0.02% sodium azide and 50% glycerol.
Storage	Store at -20°C for long term preservation (recommended). Store at 4°C for short term use.
Accession NO.	Swiss-Prot: P35968NCBI Protein: NP_002244.1

Related Information

Receptor for VEGF or VEGFC. Has a tyrosine-protein kinase activity. The VEGF-kinase ligand/receptor signaling system plays a key role in vascular development and regulation of vascular permeability. In case of HIV-1 infection, the interaction with extracellular viral Tat protein seems to enhance angiogenesis in Kaposi's sarcoma lesions

Lamallice L, et al. (2004). *Oncogene*.23(2): 434-445.

Takahashi T, et al. (2001). *EMBO J* .20(11): 2768-2778.

Note: This product is for in vitro research use only and is not intended for use in humans or animals.