

HER2(Ab-1248) Antibody

Catalog No: #21072



Package Size: #21072-1 50ul #21072-2 100ul #21072-4 25ul

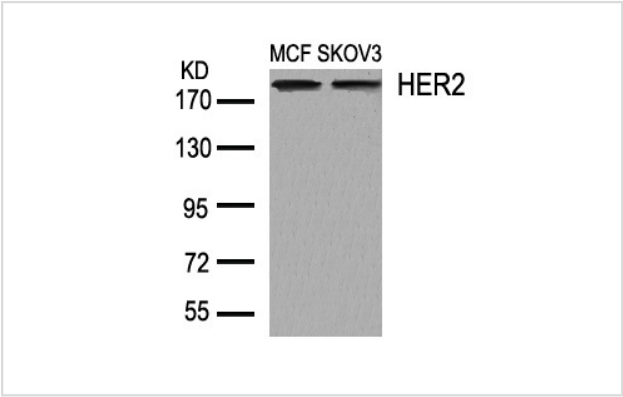
Overview

| | |
|--------------------|------------------------|
| Product Name | HER2(Ab-1248) Antibody |
| Host Species | Rabbit |
| Clonality | Polyclonal |
| Applications | WB IHC IF |
| Species Reactivity | Hu Ms Rt |
| Immunogen Type | Peptide-KLH |
| Target Name | HER2 |
| Alternative Names | C-erbB-2; ErbB2; |

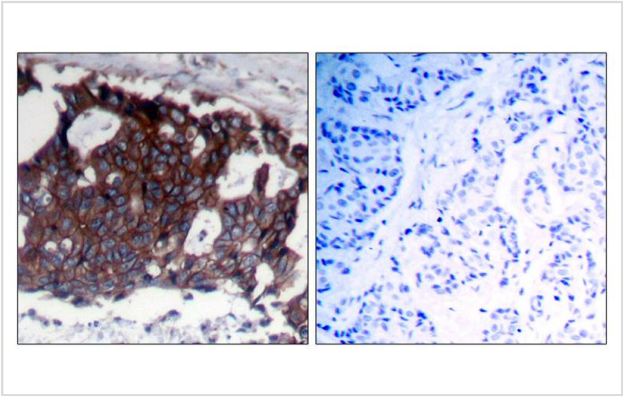
Application Details

| |
|----------------------------------|
| Predicted MW: 185kd |
| Western blotting: 1:500~1:1000 |
| Immunohistochemistry: 1:50~1:100 |
| Immunofluorescence: 1:100~1:200 |

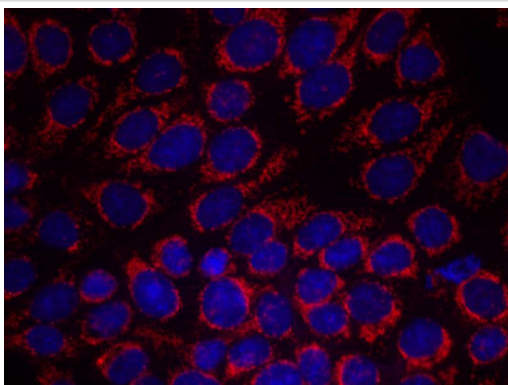
Images



Western blot analysis of extracts from MCF and SKOV3 cells using HER2(Ab-1248) Antibody #21072.



Immunohistochemical analysis of paraffin-embedded human breast carcinoma tissue using HER2(Ab-1248) Antibody #21072(left) or the same antibody preincubated with blocking peptide(right).



Immunofluorescence staining of methanol-fixed MCF7 cells using HER2(Ab-1248) Antibody #21072.

Descriptions

| | |
|---------------|---|
| Immunogen | Peptide sequence around aa. 1246~1250 (P-E-Y-L-G) derived from Human HER2. |
| Specificity | The antibody detects endogenous level of total HER2 protein. |
| Purification | Antibodies were produced by immunizing rabbits with synthetic peptide and KLH conjugates. Antibodies were purified by affinity-chromatography using epitope-specific peptide. |
| Formulation | Supplied at 1.0mg/mL in phosphate buffered saline (without Mg ²⁺ and Ca ²⁺), pH 7.4, 150mM NaCl, 0.02% sodium azide and 50% glycerol. |
| Storage | Store at -20°C for long term preservation (recommended). Store at 4°C for short term use. |
| Accession NO. | Swiss-Prot: P04626NCBI Protein: NP_001005862.1 |

Related Information

Essential component of a neuregulin-receptor complex, although neuregulins do not interact with it alone. GP30 is a potential ligand for this receptor. Not activated by EGF, TGF- α and amphiregulin.

Ramsauer VP, et al. (2003)J Biol Chem; 278(32): 30142-7.

Jepson S, et al. (2002)Oncogene; 21(49): 7524-32.

Ren Z, et al. (2002)J Biol Chem; 277(41): 38486-93.

Eppenberger-Castori S, et al. (2001)J Clin Oncol; 19(3): 645-56.

Note: This product is for in vitro research use only and is not intended for use in humans or animals.