

HER2(Ab-1221/1222) Antibody

Catalog No: #21071



Package Size: #21071-1 50ul #21071-2 100ul #21071-4 25ul

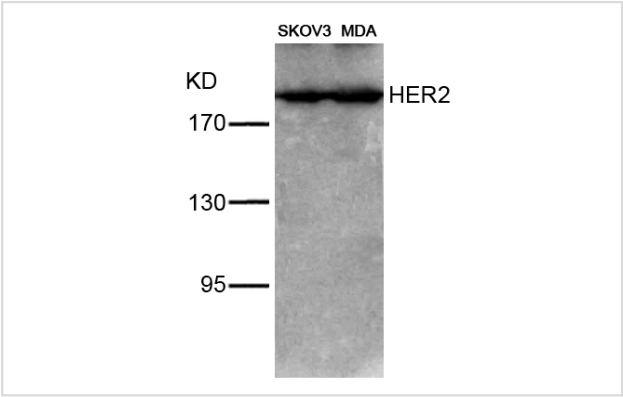
Overview

Product Name	HER2(Ab-1221/1222) Antibody
Host Species	Rabbit
Clonality	Polyclonal
Applications	WB IHC IF
Species Reactivity	Hu
Immunogen Type	Peptide-KLH
Target Name	HER2
Alternative Names	C-erbB-2; ErbB2;

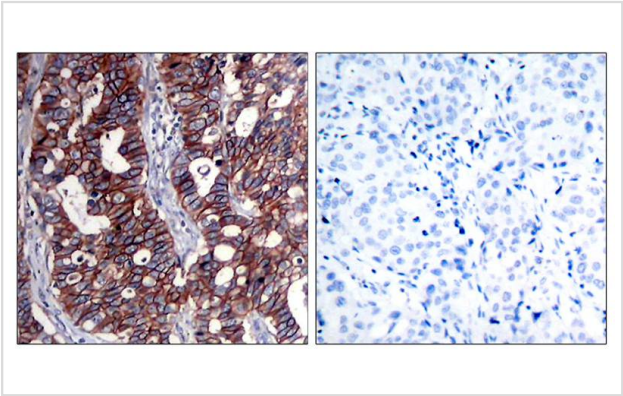
Application Details

Predicted MW: 185kd
Western blotting: 1:500~1:1000
Immunohistochemistry: 1:50~1:100
Immunofluorescence: 1:100~1:200

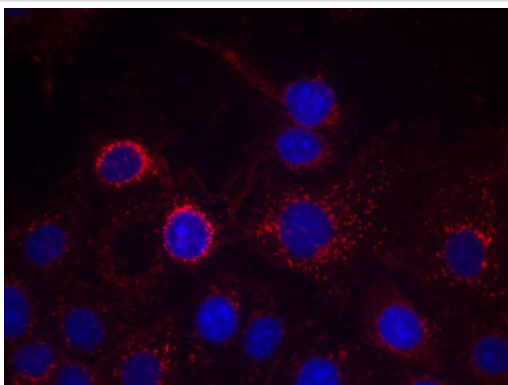
Images



Western blot analysis of extracts from SKOV3 and MDA cells using HER2(Ab-1221/1222) Antibody #21071.



Immunohistochemical analysis of paraffin-embedded human breast carcinoma tissue using HER2(Ab-1221/1222) Antibody #21071(left) or the same antibody preincubated with blocking peptide(right).



Immunofluorescence staining of methanol-fixed MCF cells using HER2(Ab-1221/1222) Antibody #21071.

Descriptions

Immunogen	Peptide sequence around aa.1219~1223/1220~1224 (N-L-Y-Y -W) derived from Human HER2.
Specificity	The antibody detects endogenous level of total HER2 protein.
Purification	Antibodies were produced by immunizing rabbits with synthetic peptide and KLH conjugates. Antibodies were purified by affinity-chromatography using epitope-specific peptide.
Formulation	Supplied at 1.0mg/mL in phosphate buffered saline (without Mg ²⁺ and Ca ²⁺), pH 7.4, 150mM NaCl, 0.02% sodium azide and 50% glycerol.
Storage	Store at -20°C for long term preservation (recommended). Store at 4°C for short term use.
Accession NO.	Swiss-Prot: P04626NCBI Protein: NP_001005862.1

Related Information

Essential component of a neuregulin-receptor complex, although neuregulins do not interact with it alone. GP30 is a potential ligand for this receptor. Not activated by EGF, TGF- α and amphiregulin.

Marone R, et al. (2004) Nat Cell Biol; 6(6): 515-22.

Ren Z, et al. (2002) J Biol Chem; 277(41): 38486-93.

Ouyang X,et al. (1998)Carcinogenesis; 19(11): 2013-9.

Ouyang X,et al. (1998) Exp Cell Res; 241(2): 467-75.

Klapper, L. N. et al. (2000) Cancer Res. 60, 3384-3388.

Note: This product is for in vitro research use only and is not intended for use in humans or animals.