

# CREB(Ab-133) Antibody

Catalog No: #21052



Package Size: #21052-1 50ul #21052-2 100ul #21052-4 25ul

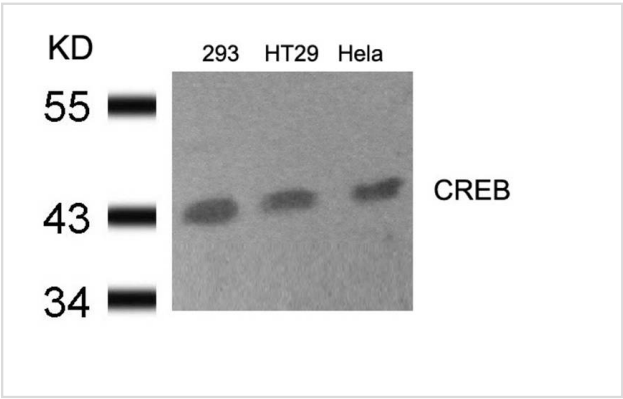
## Overview

|                    |                       |
|--------------------|-----------------------|
| Product Name       | CREB(Ab-133) Antibody |
| Host Species       | Rabbit                |
| Clonality          | Polyclonal            |
| Applications       | WB IHC                |
| Species Reactivity | Hu Ms Rt              |
| Immunogen Type     | Peptide-KLH           |
| Target Name        | CREB                  |
| Alternative Names  | CREB-1; CREB1;        |

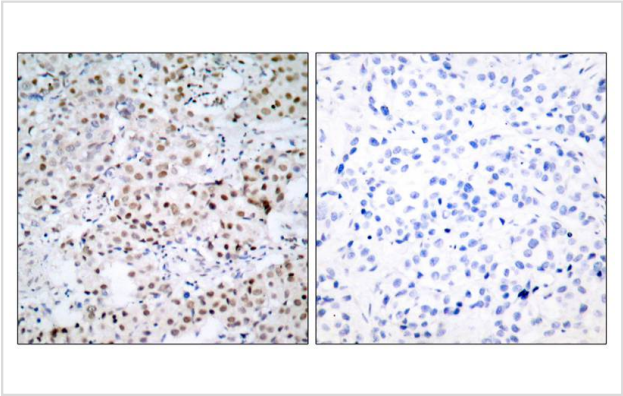
## Application Details

|                                  |
|----------------------------------|
| Predicted MW: 43kd               |
| Western blotting: 1:500~1:1000   |
| Immunohistochemistry: 1:50~1:100 |

## Images



Western blot analysis of extracts from 293, HT29 and HeLa cells using CREB(Ab-133) Antibody #21052.



Immunohistochemical analysis of paraffin-embedded human breast carcinoma tissue using CREB(Ab-133) Antibody #21052(left) or the same antibody preincubated with blocking peptide(right).

## Descriptions

|               |   |
|---------------|---|
| Immunogen     | Peptide sequence around aa. 131~135 (R-P-S-Y-R) derived from Human CREB.  |
| Specificity   | The antibody detects endogenous level of total CREB protein and it also detects the CREB-related protein ATF-1.   |
| Purification  | Antibodies were produced by immunizing rabbits with synthetic peptide and KLH conjugates. Antibodies were purified by affinity-chromatography using epitope-specific peptide. |
| Formulation   | Supplied at 1.0mg/mL in phosphate buffered saline (without Mg <sup>2+</sup> and Ca <sup>2+</sup> ), pH 7.4, 150mM NaCl, 0.02% sodium azide and 50% glycerol.                  |
| Storage       | Store at -20°C for long term preservation (recommended). Store at 4°C for short term use.   |
| Accession NO. | Swiss-Prot: P16220NCBI Protein: NP_004370.1   |

## Related Information

This protein binds the cAMP response element (CRE), a sequence present in many viral and cellular promoters. CREB stimulates transcription on binding to the CRE. Transcription activation is enhanced by the TORC coactivators which act independently of Ser-133 phosphorylation. Implicated in synchronization of circadian rhythmicity.

Xing J, et al. (1998) Mol Cell Biol 18(4): 1946-55.

Tan Y, et al. (1996) EMBO J; 15(17): 4629-42.

Hao, M. et al. (1996) J. Biol. Chem. 271, 29380-29385.

Mayo LD, et al. (2001) Biol Chem; 276(27): 25184-9.

Lu, H. et al. (1997) Mol. Cell. Biol. 17, 5923-5934.

**Note:** This product is for in vitro research use only and is not intended for use in humans or animals.