

# STAT5a(Ab-694) Antibody

Catalog No: #21048



Package Size: #21048-1 50ul #21048-2 100ul #21048-4 25ul

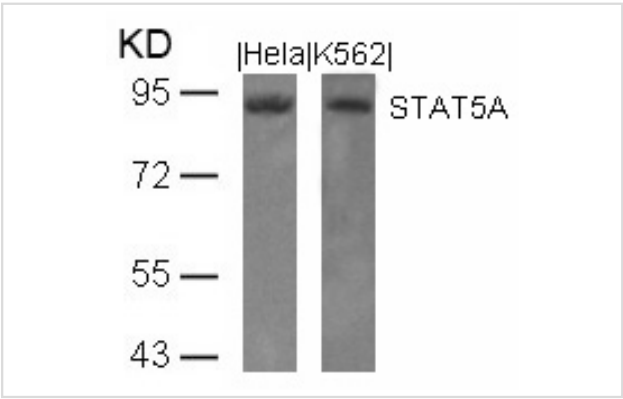
## Overview

Product Name	STAT5a(Ab-694) Antibody
Host Species	Rabbit
Clonality	Polyclonal
Applications	WB IHC
Species Reactivity	Hu Ms Rt
Immunogen Type	Peptide-KLH
Target Name	STAT5a
Alternative Names	MGF, MPF, Mammary gland factor, STA5A, STAT5

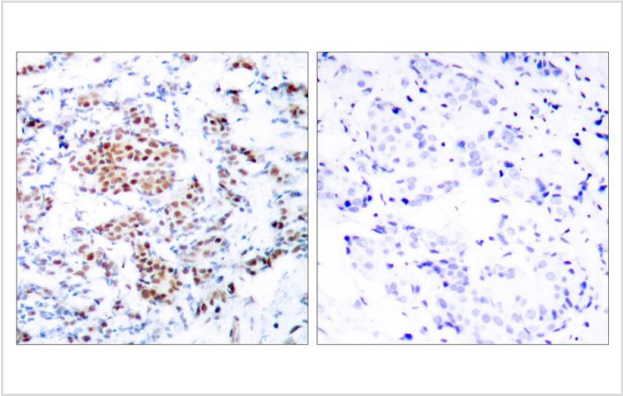
## Application Details

Predicted MW: 90kd
Western blotting: 1:500~1:1000
Immunohistochemistry: 1:50~1:100

## Images



Western blot analysis of extracts from HeLa and K562 cells using STAT5A(Ab-694) Antibody #21048.



Immunohistochemical analysis of paraffin-embedded human breast carcinoma tissue using STAT5A(Ab-694) Antibody #21048(left) or the same antibody preincubated with blocking peptide(right).

## Descriptions

Immunogen	Peptide sequence around aa. 692~696 (D-G-Y-V-K) derived from Human STAT5A.
Specificity	The antibody detects endogenous level of total STAT5A protein.
Purification	Antibodies were produced by immunizing rabbits with synthetic peptide and KLH conjugates. Antibodies were purified by affinity-chromatography using epitope-specific peptide.
Formulation	Supplied at 1.0mg/mL in phosphate buffered saline (without Mg <sup>2+</sup> and Ca <sup>2+</sup> ), pH 7.4, 150mM NaCl, 0.02% sodium azide and 50% glycerol.
Storage	Store at -20°C for long term preservation (recommended). Store at 4°C for short term use.
Accession NO.	Swiss-Prot: P42229NCBI Protein: NP_003143.2

## Related Information

Carries out a dual function: signal transduction and activation of transcription. Binds to the GAS element and activates PRL-induced transcription.

Gouilleux F, et al. (1994) EMBO J. 13: 4361-4369.

Dentelli P, et al. (1999) J Immunol. 163: 2151-2159.

Meinke A, et al. (1996) Mol Cell Biol. 16: 6937-6944.

**Note:** This product is for in vitro research use only and is not intended for use in humans or animals.