

STAT3(Ab-705) Antibody

Catalog No: #21045



Package Size: #21045-1 50ul #21045-2 100ul #21045-4 25ul

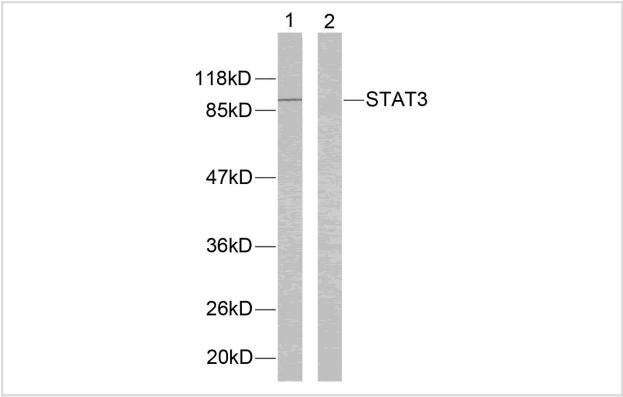
Overview

Product Name	STAT3(Ab-705) Antibody
Host Species	Rabbit
Clonality	Polyclonal
Applications	WB IHC IF
Species Reactivity	Hu Ms Rt
Immunogen Type	Peptide-KLH
Target Name	STAT3
Alternative Names	APRF; Acute-phase response factor; HIES

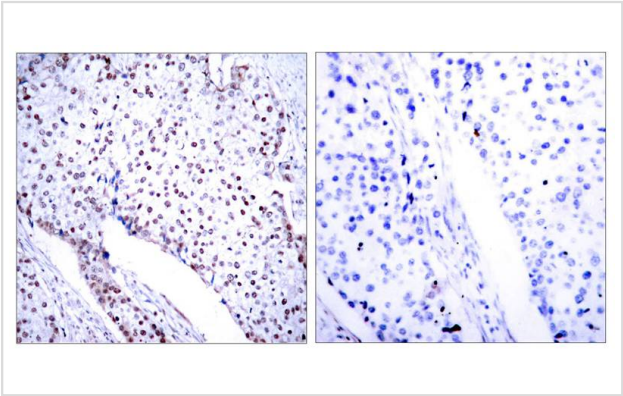
Application Details

Predicted MW: 88kd
Western blotting: 1:500~1:1000
Immunohistochemistry: 1:50~1:100
Immunofluorescence: IF:1:100~1:200

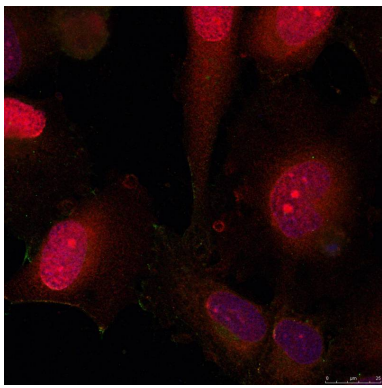
Images



Western blot analysis of extracts from Hela cells using STAT3(Ab-705) Antibody #21045(lane 1)



Immunohistochemical analysis of paraffin-embedded human breast carcinoma tissue using STAT3(Ab-705) antibody(#21045).



Immunofluorescence staining of methanol-fixed HeLa cells using STAT3(Ab-705) antibody (#21045, Red).

Descriptions

Immunogen	Peptide sequence around aa.703~707(A-P-Y-L-K) derived from Human STAT3.
Specificity	The antibody detects endogenous level of total STAT3 protein.
Purification	Antibodies were produced by immunizing rabbits with synthetic peptide and KLH conjugates. Antibodies were purified by affinity-chromatography using epitope-specific peptide.
Formulation	Supplied at 1.0mg/mL in phosphate buffered saline (without Mg ²⁺ and Ca ²⁺), pH 7.4, 150mM NaCl, 0.02% sodium azide and 50% glycerol.
Storage	Store at -20°C for long term preservation (recommended). Store at 4°C for short term use.
Accession NO.	Swiss-Prot: P40763NCBI Protein: NP_003141.2

Related Information

Transcription factor that binds to the interleukin-6 (IL-6)-responsive elements identified in the promoters of various acute-phase protein genes. Activated by IL31 through IL31RA.

Heim M H, (1999) J Recept Signal Transduct Res. 19: 75-120.

Takeda K, et al. (1997) Proc Natl Acad Sci USA. 94: 3801-3804.

Catlett-Falcone R, et al. (1999) Immunity. 10: 105-115.

Garcia R, et al. (1998) J Biomed Sci. 5: 79-85.

Bromberg J F, et al. (1999) Cell. 98: 295-303.

Note: This product is for in vitro research use only and is not intended for use in humans or animals.