

# GATA1(Ab-142) Antibody

Catalog No: #21041



Package Size: #21041-1 50ul #21041-2 100ul #21041-4 25ul

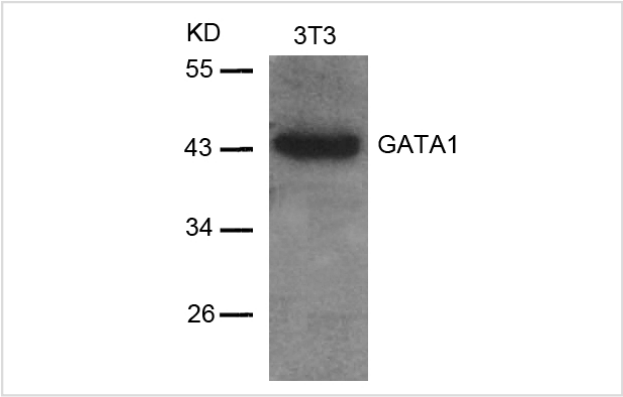
## Overview

Product Name	GATA1(Ab-142) Antibody
Host Species	Rabbit
Clonality	Polyclonal
Applications	WB IHC IF
Species Reactivity	Hu Ms Rt
Immunogen Type	Peptide-KLH
Target Name	GATA1
Alternative Names	GAT1; GATA1; GF-1; NF-E1;

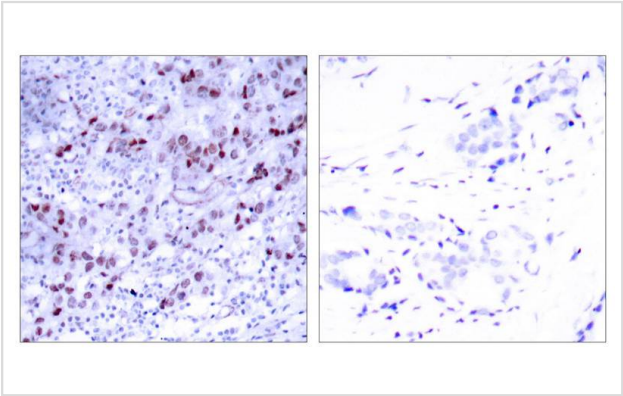
## Application Details

Predicted MW: 43kd
Western blotting: 1:500~1:1000
Immunohistochemistry: 1:50~1:100
Immunofluorescence: 1:100~1:200

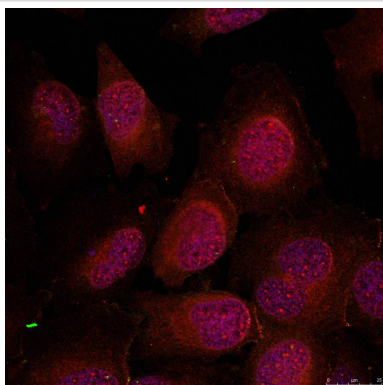
## Images



Western blot analysis of extracts from 3T3 cells using GATA1(Ab-142) Antibody #21041.



Immunohistochemical analysis of paraffin-embedded human breast carcinoma tissue using GATA1(Ab-142) Antibody #21041(left) or the same antibody preincubated with blocking peptide(right).



Immunofluorescence staining of methanol-fixed HeLa cells using GATA1(Ab-142) Antibody #21041.

## Descriptions

Immunogen	Peptide sequence around aa.140~144 (R-L-S-P-D) derived from Human GATA1.
Specificity	The antibody detects endogenous level of total GATA1 protein.
Purification	Antibodies were produced by immunizing rabbits with synthetic peptide and KLH conjugates. Antibodies were purified by affinity-chromatography using epitope-specific peptide.
Formulation	Supplied at 1.0mg/mL in phosphate buffered saline (without Mg <sup>2+</sup> and Ca <sup>2+</sup> ), pH 7.4, 150mM NaCl, 0.02% sodium azide and 50% glycerol.
Storage	Store at -20°C for long term preservation (recommended). Store at 4°C for short term use.
Accession NO.	Swiss-Prot: P15976NCBI Protein: NP_002040.1

## Related Information

GATA1 encodes a protein which belongs to the GATA family of transcription factors. The protein plays an important role in erythroid development by regulating the switch of fetal hemoglobin to adult hemoglobin. Mutations in this gene have been associated with X-linked dyserythropoietic anemia and thrombocytopenia.

Zon LI, et al. (1990) Proc Natl Acad. Sci USA. 87: 668-672.

Trainor C D, et al. (1990) Nature. 343: 92-96.

Nichols K E, et al. (2000) Nat Genet. 24: 266-270.

Freson K, et al. (2001) Blood. 98: 85-92.

Mehaffey M G, et al. (2001) Blood. 98: 2681-2688.

**Note:** This product is for in vitro research use only and is not intended for use in humans or animals.