

Elk1(Ab-389) Antibody

Catalog No: #21037



Package Size: #21037-1 50ul #21037-2 100ul #21037-4 25ul

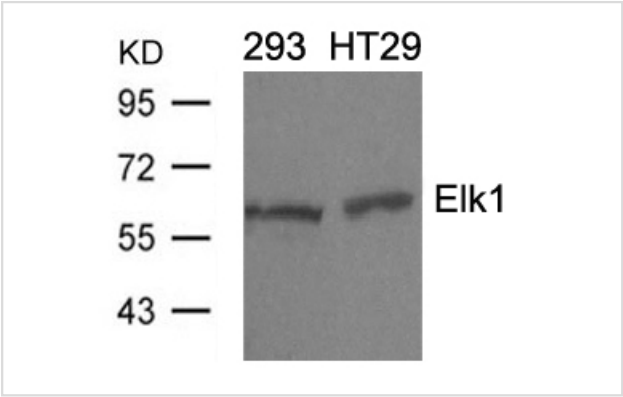
Overview

Product Name	Elk1(Ab-389) Antibody
Host Species	Rabbit
Clonality	Polyclonal
Applications	WB IHC IF
Species Reactivity	Hu Ms Rt
Immunogen Type	Peptide-KLH
Target Name	Elk1
Alternative Names	ELK1; ETS-domain protein Elk-1;

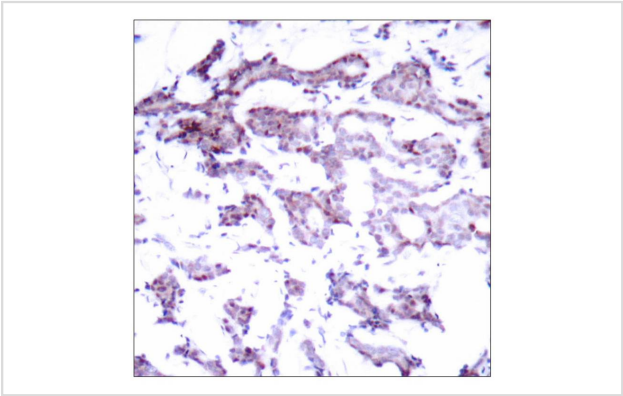
Application Details

Predicted MW: 62kd
Western blotting: 1:500~1:1000
Immunohistochemistry: 1:50~1:100
Immunofluorescence: 1:100~1:200

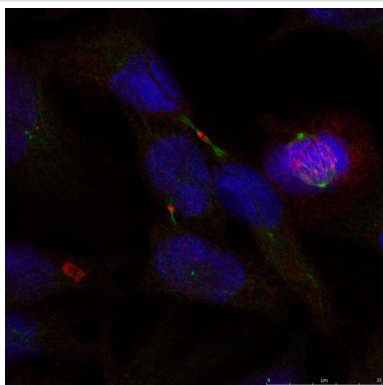
Images



Western blot analysis of extracts from 293 and HT29 cells using Elk1(Ab-389) Antibody #21037.



Immunohistochemical analysis of paraffin-embedded human breast carcinoma tissue using Elk1(Ab-389) Antibody #21037



Immunofluorescence staining of methanol-fixed HeLa cells using Elk1(Ab-389) Antibody #21037.

Descriptions

Immunogen	Peptide sequence around aa.387~391 (P-R-S-P-A) derived from Human Elk1.
Specificity	The antibody detects endogenous level of total Elk1 protein.
Purification	Antibodies were produced by immunizing rabbits with synthetic peptide and KLH conjugates. Antibodies were purified by affinity-chromatography using epitope-specific peptide.
Formulation	Supplied at 1.0mg/mL in phosphate buffered saline (without Mg ²⁺ and Ca ²⁺), pH 7.4, 150mM NaCl, 0.02% sodium azide and 50% glycerol.
Storage	Store at -20°C for long term preservation (recommended). Store at 4°C for short term use.
Accession NO.	Swiss-Prot: P19419NCBI Protein: NP_001107595.1

Related Information

Elk-1 is a member of the Ets family of transcription factors and of the ternary complex factor (TCF) subfamily. Proteins of the TCF subfamily form a ternary complex by binding to the the serum response factor and the serum response element in the promoter of the c-fos proto-oncogene. The protein encoded by this gene is a nuclear target for the ras-raf-MAPK signaling cascade. Alternatively spliced transcript variants encoding the same protein have been found for this gene

Janknecht R, et al. (1993) EMBO J. 12(13): 5097-5104.

Marais R, et al. (1993) Cell 73:381-393.

Kortenjann M, et al. (1994) Mol Cell Biol. 14:4815-4824.

Hill C S, et al. (1995) Cell. 80:199-211.

Cavigelli M, et al. (1995) EMBO J. 14:5957-5964.

Note: This product is for in vitro research use only and is not intended for use in humans or animals.