

ATF2(Ab-71 or 53) Antibody

Catalog No: #21031



Package Size: #21031-1 50ul #21031-2 100ul #21031-4 25ul

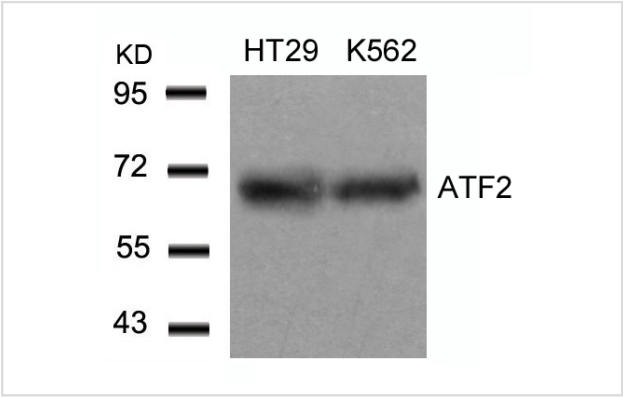
Overview

Product Name	ATF2(Ab-71 or 53) Antibody
Host Species	Rabbit
Clonality	Polyclonal
Applications	WB IHC IF
Species Reactivity	Human Mouse Rat
Immunogen Type	Peptide-KLH
Target Name	ATF2
Alternative Names	CREB2; CREBP1;

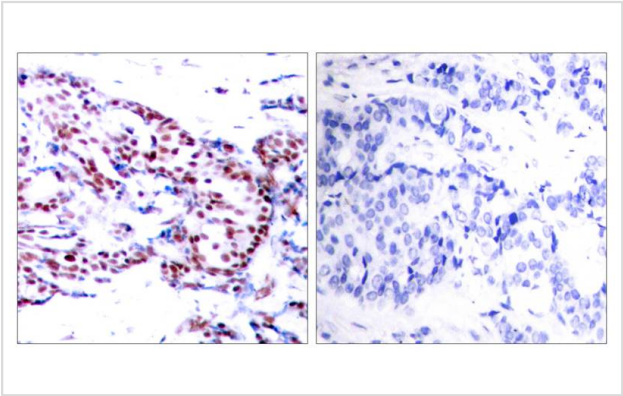
Application Details

Predicted MW: 65-75 kd
Western blotting: 1:500~1:1000
Immunohistochemistry: 1:50~1:100
Immunofluorescence: 1:100~1:200

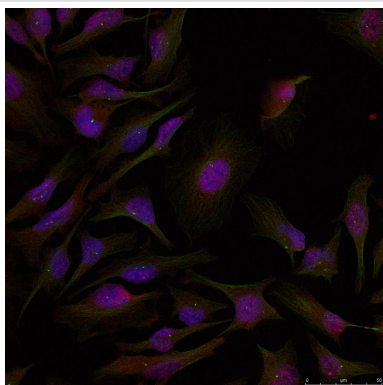
Images



Western blot analysis of extracts from HT29 and K562 cells using ATF2(Ab-71 or 53) Antibody #21031.



Immunohistochemical analysis of paraffin-embedded human breast carcinoma tissue using ATF2(Ab-71 or 53) Antibody #21031(left) or the same antibody preincubated with blocking peptide(right).



Immunofluorescence staining of methanol-fixed HeLa cells using ATF2(Ab-71 or 53) Antibody #21031.

Descriptions

Immunogen	Peptide sequence around aa.69~73 or 51~55 (T-P-T-P-T) derived from Human ATF2.
Specificity	The antibody detects endogenous level of total ATF2 protein.
Purification	Antibodies were produced by immunizing rabbits with synthetic peptide and KLH conjugates. Antibodies were purified by affinity-chromatography using epitope-specific peptide.
Formulation	Supplied at 1.0mg/mL in phosphate buffered saline (without Mg ²⁺ and Ca ²⁺), pH 7.4, 150mM NaCl, 0.02% sodium azide and 50% glycerol.
Storage	Store at -20°C for long term preservation (recommended). Store at 4°C for short term use.
Accession NO.	Swiss-Prot: P15336NCBI Protein: NP_001871.2

Related Information

Transcriptional activator, probably constitutive, which binds to the cAMP-responsive element (CRE) (consensus: 5'-GTGACGT[AC][AG]-3'), a sequence present in many viral and cellular promoters. Interaction with JUN redirects JUN to bind to CREs preferentially over the 12-O-tetradecanoylphorbol-13-acetate response elements (TREs) as part of an ATF2-c-Jun complex.

Sevilla A, et al. (2004) J Biol Chem. 279(26):27458-27465.

Waetzig G H, et al. (2002) J Immunol. 168(10): 5342-5351.

Abdel-Hafiz H A, et al. (1992) Mol Endocrinol. 6: 2079-2089.

Gupta S, et al. (1995) Science. 267: 389-393.

Van Dam H, et al. (1995) EMBO J. 14(8): 1798-1811.

Note: This product is for in vitro research use only and is not intended for use in humans or animals.