

JunD(Ab-255) Antibody

Catalog No: #21028



Package Size: #21028-1 50ul #21028-2 100ul #21028-4 25ul

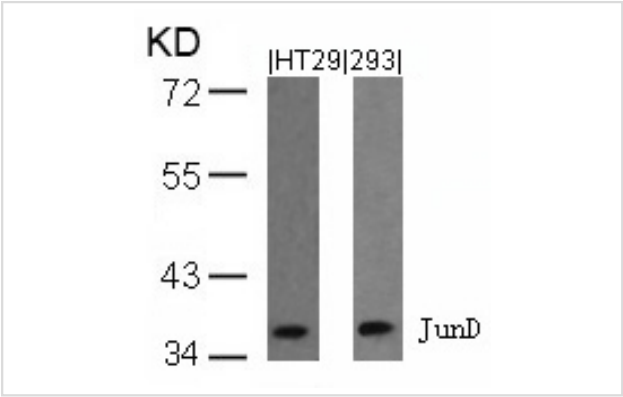
Overview

Product Name	JunD(Ab-255) Antibody
Host Species	Rabbit
Clonality	Polyclonal
Applications	WB IHC IF
Species Reactivity	Hu Ms Rt
Immunogen Type	Peptide-KLH
Target Name	JunD
Alternative Names	AP-1

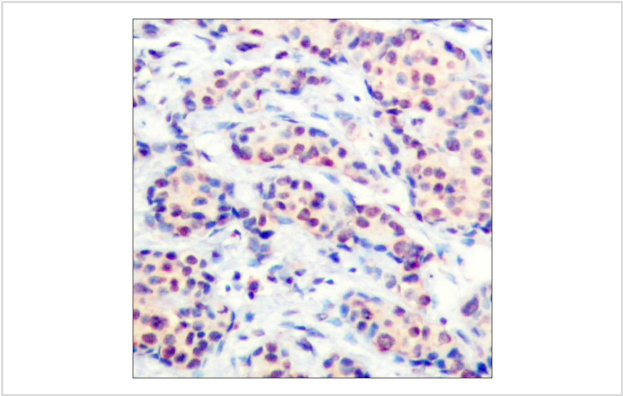
Application Details

Predicted MW: 38kd
Western blotting: 1:500~1:1000
Immunohistochemistry: 1:50~1:100
Immunofluorescence: 1:100~1:200

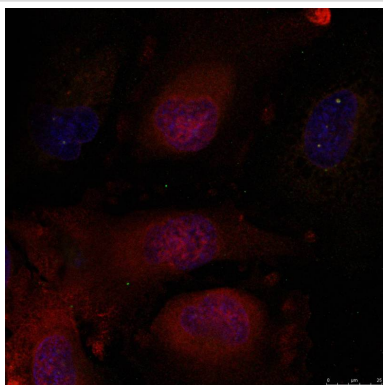
Images



Western blot analysis of extracts from HT29 and 293 cells using JunD(Ab-255) Antibody #21028.



Immunohistochemical analysis of paraffin-embedded human breast carcinoma tissue using JunD(Ab-255) Antibody #21028



Immunofluorescence staining of methanol-fixed HeLa cells using JunD(Ab-255) Antibody #21028.

Descriptions

Immunogen	Peptide sequence around aa. 253~257 (G-E-S-P-P) derived from Human JunD.
Specificity	The antibody detects endogenous level of total JunD protein.
Purification	Antibodies were produced by immunizing rabbits with synthetic peptide and KLH conjugates. Antibodies were purified by affinity-chromatography using epitope-specific peptide.
Formulation	Supplied at 1.0mg/mL in phosphate buffered saline (without Mg ²⁺ and Ca ²⁺), pH 7.4, 150mM NaCl, 0.02% sodium azide and 50% glycerol.
Storage	Store at -20°C for long term preservation (recommended). Store at 4°C for short term use.
Accession NO.	Swiss-Prot: P17535NCBI Protein: NP_005345.3

Related Information

Binds an AP-1 site and upon cotransfection stimulates the activity of a promoter that bears an AP-1 site.

Beausoleil S A, et al. (2004) Proc Natl Acad Sci U S A. 101(33): 12130-12135.

Note: This product is for in vitro research use only and is not intended for use in humans or animals.