

# c-Jun(Ab-243) Antibody

Catalog No: #21025



Package Size: #21025-1 50ul #21025-2 100ul #21025-4 25ul

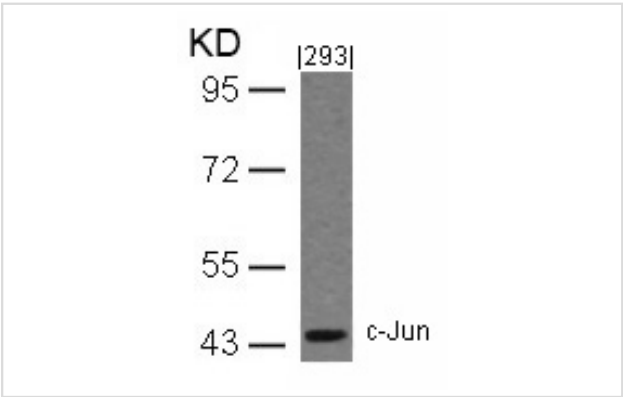
## Overview

|                    |                               |
|--------------------|-------------------------------|
| Product Name       | c-Jun(Ab-243) Antibody        |
| Host Species       | Rabbit                        |
| Clonality          | Polyclonal                    |
| Applications       | WB IHC                        |
| Species Reactivity | Hu Ms Rt                      |
| Immunogen Type     | Peptide-KLH                   |
| Target Name        | c-Jun                         |
| Alternative Names  | AH119; AP1; Jun A; c-Jun; p39 |

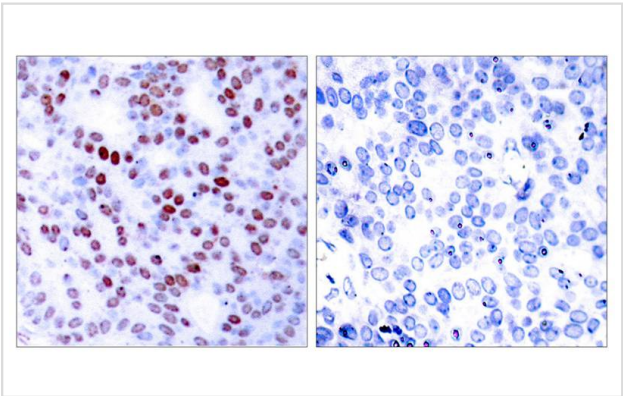
## Application Details

|                                  |
|----------------------------------|
| Predicted MW: 43kd               |
| Western blotting: 1:500~1:1000   |
| Immunohistochemistry: 1:50~1:100 |

## Images



Western blot analysis of extracts from 293 cells using c-Jun(Ab-243) Antibody #21025.



Immunohistochemical analysis of paraffin-embedded human breast carcinoma tissue using c-Jun(Ab-243) Antibody #21025(left) or the same antibody preincubated with blocking peptide(right).

## Descriptions

|               |   |
|---------------|---|
| Immunogen     | Peptide sequence around aa.241~245 (P-L-S-P-I) derived from Human c-Jun.  |
| Specificity   | The antibody detects endogenous level of total c-Jun protein.   |
| Purification  | Antibodies were produced by immunizing rabbits with synthetic peptide and KLH conjugates. Antibodies were purified by affinity-chromatography using epitope-specific peptide. |
| Formulation   | Supplied at 1.0mg/mL in phosphate buffered saline (without Mg <sup>2+</sup> and Ca <sup>2+</sup> ), pH 7.4, 150mM NaCl, 0.02% sodium azide and 50% glycerol.                  |
| Storage       | Store at -20°C for long term preservation (recommended). Store at 4°C for short term use.   |
| Accession NO. | Swiss-Prot: P05412NCBI Protein: NP_002219.1   |

## Related Information

Transcription factor that recognizes and binds to the enhancer heptamer motif 5'-TGA[CG]TCA-3'.

Note: This product is for in vitro research use only and is not intended for use in humans or animals.