

# c-Jun(Ab-170) Antibody

Catalog No: #21023



Package Size: #21023-1 50ul #21023-2 100ul #21023-4 25ul

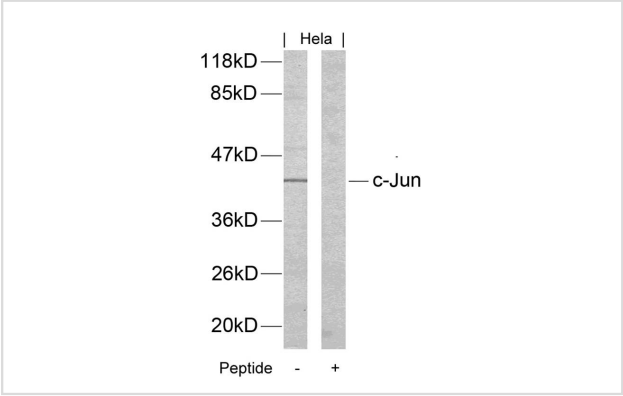
## Overview

Product Name	c-Jun(Ab-170) Antibody
Host Species	Rabbit
Clonality	Polyclonal
Applications	WB IHC
Species Reactivity	Hu Ms Rt
Immunogen Type	Peptide-KLH
Target Name	c-Jun
Alternative Names	AH119; AP1; Jun A; c-Jun; p39

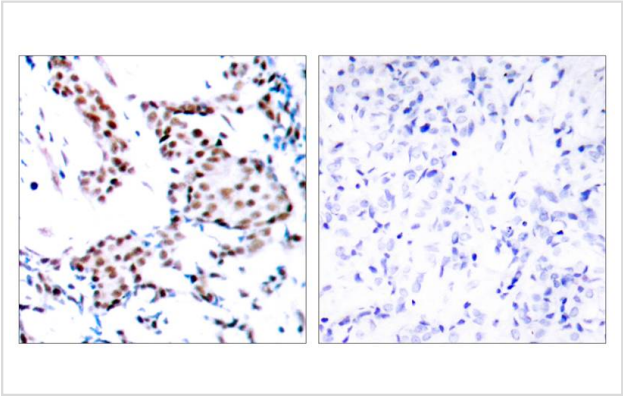
## Application Details

Predicted MW: 43kd
Western blotting: 1:500~1:1000
Immunohistochemistry: 1:50~1:100

## Images



Western blot analysis of extracts from Hela cells using c-Jun(Ab-170) Antibody #21023 and the same antibody preincubated with blocking peptide.



Immunohistochemical analysis of paraffin-embedded human breast carcinoma tissue using c-Jun(Ab-170) Antibody #21023(left) or the same antibody preincubated with blocking peptide(right).

## Descriptions

Immunogen	Peptide sequence around aa. 168~172 (P-V-Y-A-N) derived from Human c-Jun.
Specificity	The antibody detects endogenous level of total c-Jun protein.
Purification	Antibodies were produced by immunizing rabbits with synthetic peptide and KLH conjugates. Antibodies were purified by affinity-chromatography using epitope-specific peptide.
Formulation	Supplied at 1.0mg/mL in phosphate buffered saline (without Mg <sup>2+</sup> and Ca <sup>2+</sup> ), pH 7.4, 150mM NaCl, 0.02% sodium azide and 50% glycerol.
Storage	Store at -20°C for long term preservation (recommended). Store at 4°C for short term use.
Accession NO.	Swiss-Prot: P05412NCBI Protein: NP_002219.1

## Related Information

Transcription factor that recognizes and binds to the enhancer heptamer motif 5'-TGA[CG]TCA-3'.

Note: This product is for in vitro research use only and is not intended for use in humans or animals.