

MEK2(Ab-394) Antibody

Catalog No: #21008



Package Size: #21008-1 50ul #21008-2 100ul #21008-4 25ul

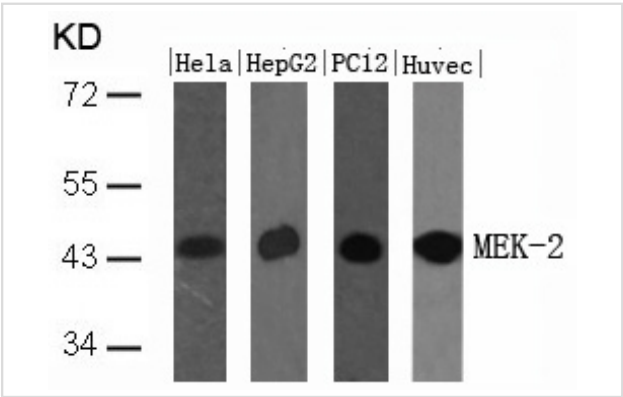
Overview

Product Name	MEK2(Ab-394) Antibody
Host Species	Rabbit
Clonality	Polyclonal
Applications	WB IHC
Species Reactivity	Hu Ms Rt
Immunogen Type	Peptide-KLH
Target Name	MEK2
Alternative Names	ERK activator kinase 2; MAP kinase kinase 2; MAP2K2; MAPK/ERK kinase 2; MAPKK 2

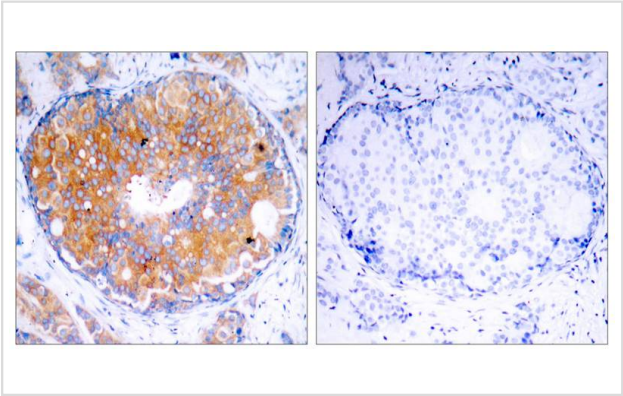
Application Details

Predicted MW: 44kd
Western blotting: 1:500~1:1000
Immunohistochemistry: 1:50~1:100

Images



Western blot analysis of extracts from HeLa, HepG2, PC12 and HUVEC cells using MEK-2(Ab-394) Antibody #21008.



Immunohistochemical analysis of paraffin-embedded human breast carcinoma tissue using MEK-2(Ab-394) Antibody #21008(left) or the same antibody preincubated with blocking peptide(right).

Descriptions

Immunogen	Peptide sequence around aa.392~396 (P-G-T-P-T) derived from Human MEK-2.
Specificity	The antibody detects endogenous level of total MEK2 protein.
Purification	Antibodies were produced by immunizing rabbits with synthetic peptide and KLH conjugates. Antibodies were purified by affinity-chromatography using epitope-specific peptide.
Formulation	Supplied at 1.0mg/mL in phosphate buffered saline (without Mg ²⁺ and Ca ²⁺), pH 7.4, 150mM NaCl, 0.02% sodium azide and 50% glycerol.
Storage	Store at -20°C for long term preservation (recommended). Store at 4°C for short term use.
Accession NO.	Swiss-Prot: P36507NCBI Protein: NP_109587.1

Related Information

Catalyzes the concomitant phosphorylation of a threonine and a tyrosine residue in a Thr-Glu-Tyr sequence located in MAP kinases. Activates the ERK1 and ERK2 MAP kinases

Crews C M, et al. (1992) Science. 258:478-480.

Alessi D R, et al. (1994) EMBO J. 13:1610-1619.

Rosen L B, et al. (1994) Neuron. 12:1207-1221.

Cowley S, et al. (1994) Cell. 77:841-852.

Note: This product is for in vitro research use only and is not intended for use in humans or animals.