

Raf1(Ab-259) Antibody

Catalog No: #21006



Package Size: #21006-1 50ul #21006-2 100ul #21006-4 25ul

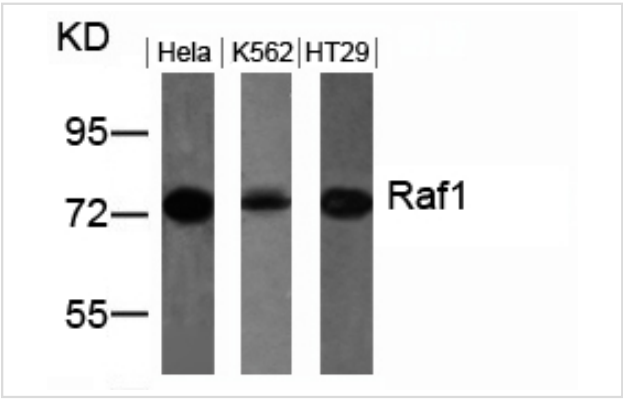
Overview

Product Name	Raf1(Ab-259) Antibody
Host Species	Rabbit
Clonality	Polyclonal
Applications	WB IHC
Species Reactivity	Hu Ms Rt
Immunogen Type	Peptide-KLH
Target Name	Raf1
Alternative Names	C-RAF; C-Raf; CRAF

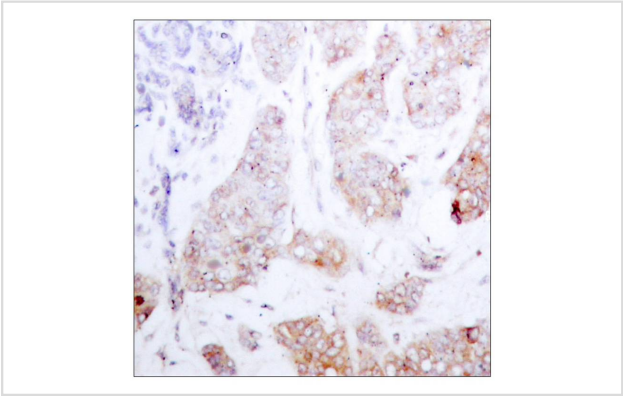
Application Details

Predicted MW: 73kd
Western blotting: 1:500~1:1000
Immunohistochemistry: 1:50~1:100

Images



Western blot analysis of extracts from HeLa, K562 and HT29 cells using Raf1(Ab-259) Antibody #21006.



Immunohistochemical analysis of paraffin-embedded human breast carcinoma tissue using Raf1(Ab-259) Antibody #21006.

Descriptions

Immunogen	Peptide sequence around aa.257~261 (S-T-S-T-P) derived from Human RAF.
Specificity	The antibody detects endogenous level of total Raf1 protein.
Purification	Antibodies were produced by immunizing rabbits with synthetic peptide and KLH conjugates. Antibodies were purified by affinity-chromatography using epitope-specific peptide.
Formulation	Supplied at 1.0mg/mL in phosphate buffered saline (without Mg ²⁺ and Ca ²⁺), pH 7.4, 150mM NaCl, 0.02% sodium azide and 50% glycerol.
Storage	Store at -20°C for long term preservation (recommended). Store at 4°C for short term use.
Accession NO.	Swiss-Prot: P04049NCBI Protein: NP_002871.1

Related Information

Involved in the transduction of mitogenic signals from the cell membrane to the nucleus. Part of the Ras-dependent signaling pathway from receptors to the nucleus. Protects cells from apoptosis mediated by STK3.

Dougherty M K, et al. (2005) Mol Cell. 17(2): 215-224.

Hekman M, et al. (2005) FEBS Lett. 579(2): 464-468.

Avruch J, et al. (1994) Trends Biochem. Sci. 19, 279-283.

Chong H, et al. (2001) EMBO J. 20, 3716-3727.

King A J, et al. (1998) Nature. 396:180-183.

Fabian J R, et al. (1993) Mol Cell Biol. 13: 7170-7179.

Note: This product is for in vitro research use only and is not intended for use in humans or animals.