

c-Jun(Ab-73) Antibody

Catalog No: #21003



Package Size: #21003-1 50ul #21003-2 100ul #21003-4 25ul

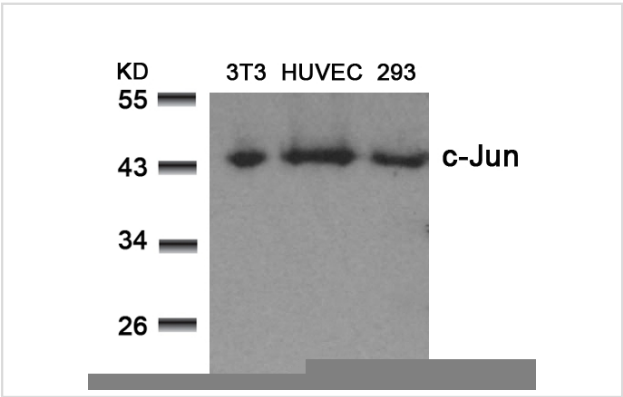
Overview

Product Name	c-Jun(Ab-73) Antibody
Host Species	Rabbit
Clonality	Polyclonal
Applications	WB IHC
Species Reactivity	Hu Ms Rt
Immunogen Type	Peptide-KLH
Target Name	c-Jun
Alternative Names	AH119; AP1; Jun A; c-Jun; p39

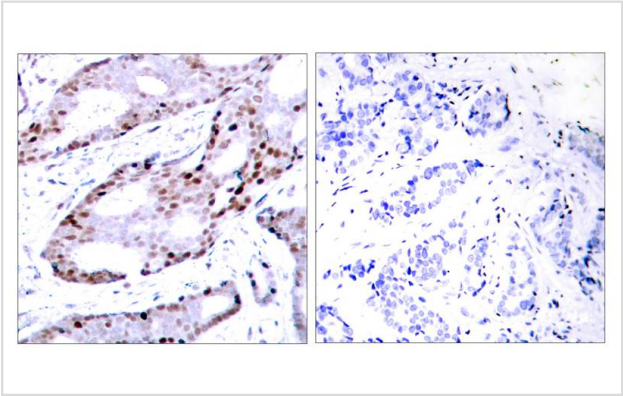
Application Details

Predicted MW: 43kd
Western blotting: 1:500~1:1000
Immunohistochemistry: 1:50~1:100

Images



Western blot analysis of extracts from 3T3, HUVEC and 293 cells using c-Jun(Ab-73) Antibody #21003.



Immunohistochemical analysis of paraffin-embedded human breast carcinoma tissue using c-Jun(Ab-73) Antibody #21003(left) or the same antibody preincubated with blocking peptide(right).

Descriptions

Immunogen	Peptide sequence around aa.71~75 (L-A-S-P-E) derived from Human c-Jun.
Specificity	The antibody detects endogenous level of total c-Jun protein.
Purification	Antibodies were produced by immunizing rabbits with synthetic peptide and KLH conjugates. Antibodies were purified by affinity-chromatography using epitope-specific peptide.
Formulation	Supplied at 1.0mg/mL in phosphate buffered saline (without Mg ²⁺ and Ca ²⁺), pH 7.4, 150mM NaCl, 0.02% sodium azide and 50% glycerol.
Storage	Store at -20°C for long term preservation (recommended). Store at 4°C for short term use.
Accession NO.	Swiss-Prot: P05412NCBI Protein: NP_002219.1

Related Information

Transcription factor that recognizes and binds to the enhancer heptamer motif 5'-TGA[CG]TCA-3'.

Sevilla A, et al. (2004) Oncogene.23 (55): 8950-8958.

Beausoleil S A, et al. (2004) Proc Natl Acad Sci U S A. 101(33): 12130-12135.

Binetruy B, et al. (1991) Nature. 351:122-127.

Smeal T, et al. (1991) Nature. 354: 494-496.

Derijard B, et al. (1994) Cell. 76:1025-1037.

Note: This product is for in vitro research use only and is not intended for use in humans or animals.