

c-Jun(Ab-63) Antibody

Catalog No: #21001



Package Size: #21001-1 50ul #21001-2 100ul #21001-4 25ul

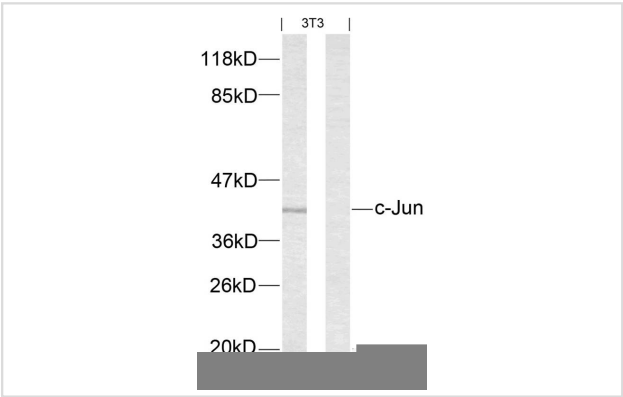
Overview

Product Name	c-Jun(Ab-63) Antibody
Host Species	Rabbit
Clonality	Polyclonal
Applications	WB
Species Reactivity	Hu Ms Rt
Immunogen Type	Peptide-KLH
Target Name	c-Jun
Alternative Names	AH119; AP1; Jun A; c-Jun; p39

Application Details

Predicted MW: 43kd
Western blotting: 1:500~1:1000

Images



Western blot analysis of extracts from 3T3 cells using c-Jun(Ab)

Descriptions

Immunogen	Peptide sequence around aa. 61~65 (L-T-S-P-D) derived from Human c-Jun.
Specificity	The antibody detects endogenous level of total c-Jun protein.
Purification	Antibodies were produced by immunizing rabbits with synthetic peptide and KLH conjugates. Antibodies were purified by affinity-chromatography using epitope-specific peptide.
Formulation	Supplied at 1.0mg/mL in phosphate buffered saline (without Mg2+ and Ca2+), pH 7.4, 150mM NaCl, 0.02% sodium azide and 50% glycerol.
Storage	Store at -20°C for long term preservation (recommended). Store at 4°C for short term use.
Accession NO.	Swiss-Prot: P05412NCBI Protein: NP_002219.1

## Related Information

Transcription factor that recognizes and binds to the enhancer heptamer motif 5'-TGA[CG]TCA-3'.

Wei W, et al. (2005). Cancer Cell. 8(1): 25-33.

Sevilla A, et al. (2004). Oncogene.23 (55): 8950-8958.

Li L, et al. (2004). J Biol Chem.279 (6): 4058-4065.

Hurd C, et al. (2002). Oncogene.21 (14): 2154-2160.

## Published Papers

kira Ikari, Hayato Sawada et al., Down-regulation of TRPM6-mediated magnesium influx by cyclosporin A Naunyn-Schmiedeberg's., Archives of Pharmacology, 377(4-6):333-43(2008)

[PMID:18026717](#)

Note: This product is for in vitro research use only and is not intended for use in humans or animals.